

Features: Ruby Ball Contact Points

- Hardness, resistance to wear.
- Chemical and thermal stability, extremely low friction coefficient, negligible thermal expansion.

Features #52-525-075

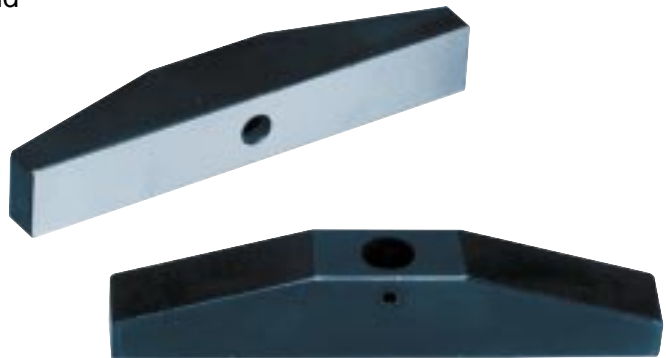
- The Rubber Boot is a protective cover for contact points of dial indicators. Fits all indicators in the #52-520 series.

Features: Dial Indicator Depth Bases

- Precision ground and hardened.
- Accepts any standard AGD dial indicator with $\frac{3}{8}$ " stem.
- Manufactured from hardened steel, ground for flatness and black oxide plated.



▲ 52-525 Series Contact points



▲ 52-125-002 & 004 Depth Bases



Order No.	Description	Tip Length	Ball Size	Thread
52-525-250	Ruby Ball Contact Point	$\frac{1}{4}$ "	3mm	4-48
52-525-260	Ruby Ball Contact Point	$\frac{1}{4}$ "	3mm	M2.5
52-525-500	Ruby Ball Contact Point	$\frac{1}{2}$ "	3mm	4-48
52-525-750	Ruby Ball Contact Point	$\frac{3}{4}$ "	3mm	4-48
52-525-255	Ruby Ball Contact Point	$\frac{1}{4}$ "	4mm	4-48
52-525-265	Ruby Ball Contact Point	$\frac{1}{4}$ "	4mm	M2.5
52-525-505	Ruby Ball Contact Point	$\frac{1}{2}$ "	4mm	4-48
52-525-755	Ruby Ball Contact Point	$\frac{3}{4}$ "	4mm	4-48
<hr/>				
52-525-075	Rubber Boot			
<hr/>				
52-125-002	Dial Indicator Depth Base—Length $2\frac{1}{2}$ "			
52-125-004	Dial Indicator Depth Base—Length 4"			



Dial Indicator Accessories



52-525-155



52-525-140



52-525-150



52-525-145

▲ *Special Contacts*

- Popular contacts for dial indicators. 4-48 threads fit all AGD Groups 1, 2, 3 and 4 indicators.



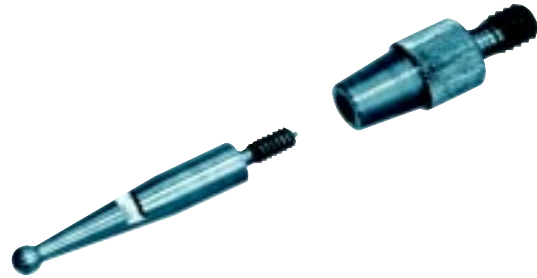
▲ *Button Contacts*

- Hardened steel with black oxide plating. AGD 4-48 threads



▲ *Flat Contacts*

- Hardened steel with black oxide plating. AGD 4-48 threads



▲ *Adapt-a-tip*

Fowler's Adapt-a-tip is a unique and handy conversion point that allows your test indicator tip to be used on your dial indicator.

- Measures small grooves and pockets or other hard to reach places. Fits any standard 4-48 threaded AGD dial indicators.



Order No.	Description
Special Contacts	
52-525-140	Roller ball contact point 4-48
52-525-145	Chisel type contact point 4-48
52-525-150	Knife contact point 4-48
52-525-155	1/8" Carbide ball contact pt. 4-48

Button Contact Points	
52-525-160	3/8" Button Contact point 4-48
52-525-165	1/2" Button Contact point 4-48
52-525-170	3/4" Button Contact point 4-48

Flat Contact Points	
52-525-175	3/8" Flat Contact Point 4-48
52-525-180	1/2" Flat Contact Point 4-48
52-525-185	5/8" Flat Contact Point 4-48
52-525-190	3/4" Flat Contact Point 4-48
52-525-195	1" Flat Contact Point 4-48
52-525-200	1-1/2" Flat Contact Point 4-48

Order No.	Internal Thread	Dia.	Length
Adapt-a-tip			
52-566-000	M1.4 x .35	5/35	.330
	Fits Brown & Sharpe & Fowler/Girod old style indicators		
52-566-002	M1.6 x .35	5/35	.330
	Fits Fowler/Girod old style, Interapid, Compac, Peacock, etc.		

