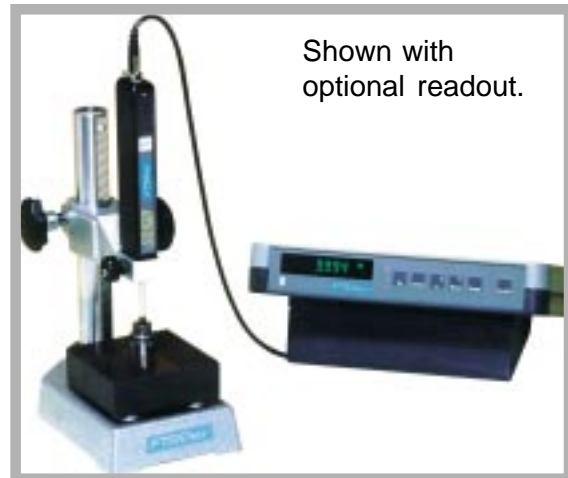


# Fowler

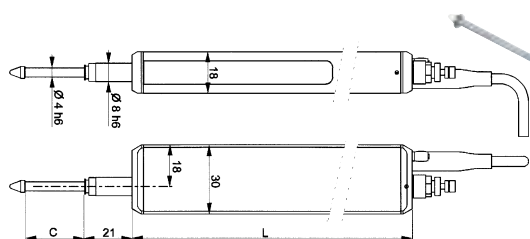
## Sylvac Incremental Probes



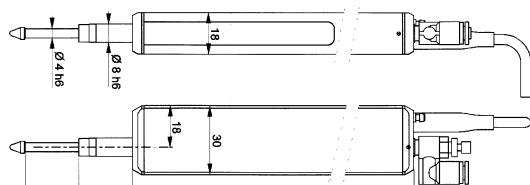
Fowler is pleased to introduce Sylvac's Incremental Probes using Sylvac's patented measuring system. They are available in standard, protected and waterproof models, in ranges of 1"/25mm, 2"/50mm and 4"/100mm. They have direct RS232 output and can be connected directly to your PC or to one of our optional remote displays.

- Standard probes offer protection in accordance with IEC529 from IP40 to IP52
- The #54-619-508 protected probe has a built-in rubber boot for harsher environments
- Waterproof models provide an IP rating from 65 to 67—they can be fully submerged up to 49'/15m!
- Bidirectional RS232 communication
- Powered from PC or display unit (3m cable)
- Models with integrated lifters are available
- Resolution of .00005"/.001mm
- Repeatability .00008"/2 $\mu$ m( $\pm$ 2s)





Protected and Standard Probes



Waterproof Probes



Order No.	Range	Probe Type	Accuracy	L	C
54-619-501	1"/25mm	Standard	.0002"/5 $\mu$ m	123mm	26mm
54-619-621	2"/50mm	Standard	.0005"/12 $\mu$ m	180mm	53mm
54-619-661	4"/100mm	Standard	.0006"/15 $\mu$ m	280mm	103mm
54-619-508	1"/25mm	Protected	.0002"/5 $\mu$ m	123mm	36.5mm
54-619-507	1"/25mm	Waterproof	.0002"/5 $\mu$ m	123mm	23mm
54-619-525	2"/50mm	Waterproof	.0005"/12 $\mu$ m	180mm	48mm
54-619-665	4"/100mm	Waterproof	.0006"/15 $\mu$ m	280mm	98mm

## Accessories for Standard and Protected Probes:

54-618-160 16-Channel pneumatic control unit

54-619-260 Rate reducer

## Accessories for Waterproof Probes:

54-619-251 Controlled pressure unit (IP rating of 67 with waterproof probes)

54-619-253 Controlled lifting unit

## Accessories for Standard, Protected and Waterproof Probes:

54-619-249 Simple pressure unit (IP rating of 52 with Standard and Protected)  
(IP rating of 65 with waterproof probes)

54-619-252 Simple lifting unit

54-619-263 Pneumatic foot pedal

54-619-261 Snap connector X2 for air lifting

54-619-262 Snap connector X4 for air lifting

54-619-145 Adaptor to use with D80/D101 display units

54-618-140 Digital display unit (D80) includes foot pedal #54-618-165

54-618-151 Digital indication unit (D101) includes foot pedal #54-618-165

54-618-220 Multi-function digital readout (D232S). Includes foot pedal.