



▲ 54-805-150



▲ 54-810-150



Fowler/Wyler Digital Minilevels come in 2 different styles—#54-805-150, a horizontal Minilevel, has a screw-on type base and #54-810-150 & 200 angular type Minilevels have two prismatic measuring bases for shafts and flat faces—horizontal and vertical.

- The principle of measuring is based on the characteristic of a pendulum. A disc of mass, suspended on leaf springs, fitted between the electrodes emits a signal of capacity change between the disc and the electrode as a deviation. (It supplies the information of deviation by changing the capacity between the disc and the electrode.)
- The measuring element also tolerates a less accurate manipulation since all

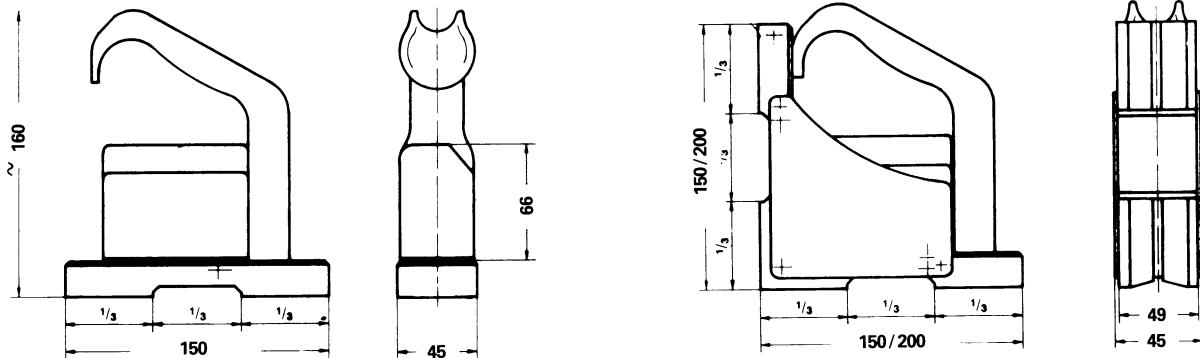
working parts are frictionless and abrasion is eliminated. Excessive shocks at the worst will only displace the zero setting.

- The values of changing capacity are amplified electronically with carrier frequency amplifier, rectified and transferred to the digital readout. The disc of mass and the electrode together form a hermetically sealed differential condenser. Therefore the suppression being formed by air allows fast measurements with extreme accuracy.
- Output allows the following variations:
 - a) Recorder, Printer, Computer;
 - b) Second Minilevel for difference measurements, for angle measurements under vibrations and/or acceleration.



Fowler

Wyler Classic Minilevels



▲ Horizontal type Minilevels #54-805-150 (metric dimensions).

▲ Angular type Minilevels #54-810-150 & #54-810-200 (metric dimensions).

Specifications:

- Measuring capacity: ± 1999 sensitivity units.
- Rapid indication: Minilevel can be read about 3 seconds after setting.
- Twist-stable prismatic base $\pm .0008$ " per 10" on ± 5 degrees on cylinders of 1.2" to 4.2".
- Two batteries (Mallory TR 164) for approximately 250 hours of continuous operation.
- Zero adjusting: Range pos. 1 ± 50 digits; range pos. 11 ± 500 digits.
- Battery test: Position B of switch. If value is lower than 700, batteries must be exchanged.
- Repeatability: Repeats to 1 sensitivity unit.
- Indication of inclination: (Angular deviation), point above = higher position at left; point below = lower position at left.
- Accuracy: Linearity typically 1%.
- Accuracy: Sensitivity typically 2%.
- **Magnetic inserts available optionally.**
- Includes fitted case.



Order No.	Sensitivity Inch	Overall Metric	Angular	Length	Total Weight
54-805-150	.0005"/10"	.05mm/m	10 sec.	6" (150mm)	3 lbs.
	.00005"/10"	.005mm/m	1 sec.		
54-810-150	.0005"/10"	.05mm/m	10 sec.	6" (150mm)	4 1/2 lbs.
	.00005"/10"	.005mm/m	1 sec.		
54-810-200	.0005"/10"	.05mm/m	10 sec.	8" (200mm)	7 lbs.
	.00005"/10"	.005mm/m	1 sec.		
54-801-100	Differential cable for use with 2nd Minilevel for difference measurements				
54-801-200	Replacement 5.6V battery (included with all Minilevels).				

Other sizes, styles, sensitivities available. Price quoted upon request.