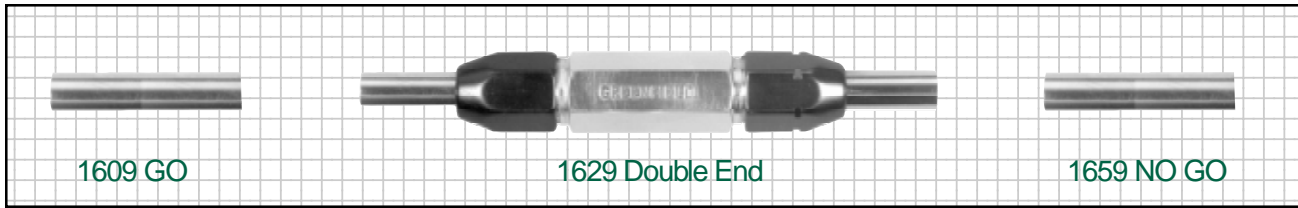




Reversible ■ Steel or Chrome Plated Cylindrical Plug ■ Inch and Metric Sizes

Plain Gages



Class XX: Used where product limits are extremely close or for master gages.

Class X: Used where product limits are relatively close, or occasionally for master gages.

Class Y: Used where product limits are normal to liberal.

Class Z: Used where product limits are quite liberal.

Application of tolerances unless otherwise specified:

GO = Plus

NO GO = Minus

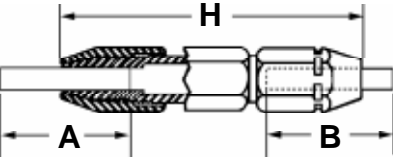
Master = Bilateral

Master Reversible Plug Gage 1615

Reversible plug gage members are straight and held to size their entire length, thus permitting use of both ends. When worn at one end the member may be quickly reversed in the specially designed handle and the unused end put into use.

All Greenfield cylindrical plug gages are made to American Gage Design Standards and are precision lapped for overall accuracy, finish and wearability of the gaging surface.

Selection of gage tolerance should be in relation to the amount of the tolerance on product being gaged. The normal rule of thumb is that the gage tolerance should not exceed 10% of the product tolerance equally divided between the GO and NO GO conditions.

General Dimensions 	Size Ranges		Tolerances				A Length Member GO or NO GO	Handle	
	Inches Above - To	mm Above - To	XX	X	Y	Z		No.	Hex
	The aluminum handles are made to American Gage Design. The gaging members are securely held by means of brass or aluminum bushings compressed when the aluminum nuts are tightened.								
	.010 - .075	.25 - 1.91	.00002	.00004	.00007	.00010	2	1W	1/4
	.075 - .180	1.91 - 4.57	.00002	.00004	.00007	.00010	2	2W	3/8
	.180 - .281	4.57 - 7.14	.00002	.00004	.00007	.00010	2	3W	9/16
	.281 - .406	7.14 - 10.31	.00002	.00004	.00007	.00010	2	4W	1 1/16
	.406 - .510	10.31 - 12.95	.00002	.00004	.00007	.00010	2	5W	13/16
	.510 - .635	12.95 - 16.13	.00002	.00004	.00007	.00010	2	6W	15/16
	.635 - .760	16.13 - 19.30	.00002	.00004	.00007	.00010	2	7W	1 1/16
	.760 - .825	19.30 - 20.96	.00002	.00004	.00007	.00010	2	8W	1 1/4
	.825 - 1.010	20.96 - 25.65	.00003	.00006	.00009	.00012	2	8W	1 1/4

continued on next page

Depth Steps / Air Grooves



Available on wires and taper locks

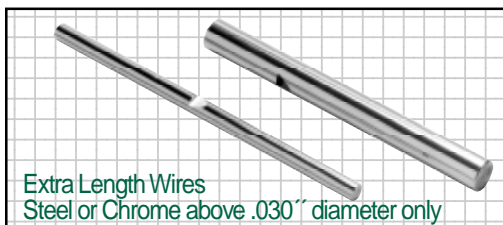
■ **Depth Steps** - .093" diameter and above only (Price per member of same size.)

■ **Air Grooves** - Add \$13.00 for first member and \$7.00 for each additional member on same order.

Prices for depth steps and air grooves for members longer than 2" are available upon request.

Step Tolerance	Depth Steps		
	1 Member		
	1 Step	2 Step	4 Step
.001" and over	20.00	37.00	73.00
Under .001" to .0005"	25.00	46.00	91.00

Extra Length Wires



Above	to & including	Price on Application
2" (50.8mm)	3" (76.2mm)	
3" (76.2mm)	4" (101.6mm)	
4" (101.6mm)	5" (127.0mm)	
5" (127.0mm)	6" (152.4mm)	

Reversible ■ Steel or Chrome Plated Cylindrical Plug ■ Inch and Metric Sizes



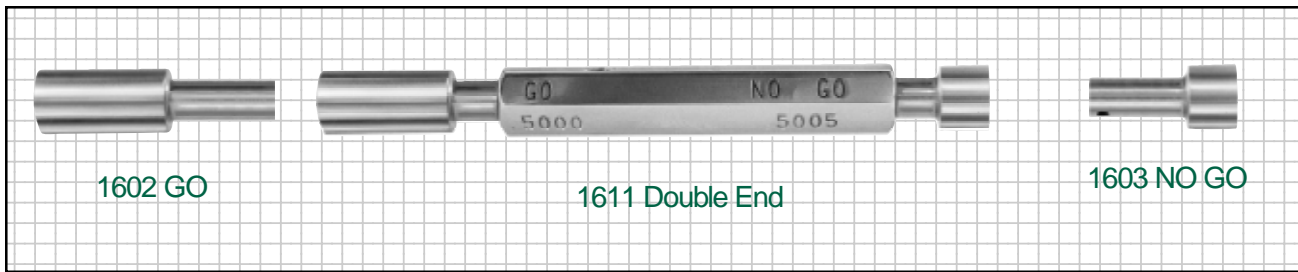
Size Range Inches mm Above - To	Class	Steel Price Each				D.E.GO & NO GO w/handle	Chrome Plated Price Each				Handle only	
		GO or NO GO members					GO or NO GO members				No.	Price
		1	2	3-5		1	2	3-5				
.0071 - .0299'' .180 - .759mm	XX	38.70	36.80	34.90	86.40	Price on Application				1W	9.00	
	X	28.70	27.20	25.80	66.40							
	Y	26.50	25.20	23.40	62.00							
	Z	24.60	23.40	22.20	58.20							
.030 - .0749'' .762 - 1.902mm	XX	26.00	24.70	23.40	61.00	33.80	32.10	30.40	76.60	1W	9.00	
	X	20.30	19.30	18.30	49.60	26.40	25.10	23.80	61.80			
	Y	17.70	16.90	16.00	44.40	23.00	22.00	20.80	55.00			
	Z	14.30	13.60	12.90	37.60	18.60	17.70	16.80	46.20			
.075 - .1799'' 1.905 - 4.569mm	XX	27.40	26.00	24.70	63.80	35.60	33.80	32.10	80.20	2W	9.00	
	X	21.70	20.60	19.50	52.40	28.20	26.80	25.40	65.40			
	Y	18.40	17.50	16.60	45.80	23.90	22.80	21.60	56.80			
	Z	15.40	14.60	13.80	39.80	20.00	19.00	17.90	49.00			
.180 - .2809'' 4.572 - 7.135mm	XX	28.00	26.60	25.20	66.00	36.40	34.60	32.80	82.80	3W	10.00	
	X	22.40	21.20	20.10	54.80	29.10	27.60	26.10	68.20			
	Y	18.80	17.90	17.00	47.60	24.40	23.30	22.10	58.80			
	Z	15.60	14.80	14.00	41.20	20.30	19.20	18.20	50.60			
.281 - .4059'' 7.1374 - 10.309mm	XX	29.00	27.50	26.00	69.00	37.70	35.80	33.80	86.40	4W	11.00	
	X	22.60	21.40	20.30	56.20	29.40	27.80	26.40	69.80			
	Y	19.10	18.10	17.20	49.20	24.80	23.50	22.40	60.60			
	Z	15.80	15.00	14.20	42.60	20.50	19.50	18.50	52.00			
.406 - .5099'' 10.3124 - 12.951mm	XX	30.80	29.20	27.70	73.60	40.00	38.00	36.00	92.00	5W	12.00	
	X	23.00	21.90	20.70	58.00	29.90	28.50	26.90	71.80			
	Y	19.40	18.40	17.50	50.80	25.20	23.90	22.80	62.40			
	Z	17.20	16.40	15.50	46.40	22.40	21.30	20.20	56.80			
.510 - .6349'' 12.954 - 16.126mm	XX	33.10	31.40	29.80	79.20	43.00	40.80	38.70	99.00	6W	13.00	
	X	26.20	24.90	23.60	65.40	34.10	32.40	30.70	81.20			
	Y	22.30	21.20	20.00	57.60	29.00	27.60	26.00	71.00			
	Z	19.80	18.80	17.90	52.60	25.70	24.40	23.30	64.40			
.635 - .760'' 16.129 - 19.304mm	XX	34.80	33.30	31.60	85.60	45.20	43.30	41.10	106.40	7W	16.00	
	X	27.80	26.40	25.00	71.60	36.10	34.30	32.50	88.20			
	Y	23.70	22.50	21.10	63.40	30.80	29.30	27.40	77.60			
	Z	21.50	20.40	19.30	59.00	28.00	26.50	25.10	72.00			
.761 - 1.000'' 19.329 - 25.400mm	XX	41.70	39.60	37.50	105.40	54.20	51.50	48.80	130.40	8W	22.00	
	X	36.60	34.80	33.00	95.20	47.60	45.20	42.90	117.20			
	Y	31.40	29.80	28.20	84.80	40.80	38.70	36.70	103.60			
	Z	29.00	27.50	26.10	80.00	37.70	35.80	33.90	97.40			

Handles are not included with single members. If handles are required with either GO or NO GO members, specify "with handle."
Pricing for larger quantities available upon request. Carbide is also available upon request.



Taper Lock ■ Steel or Chrome Plated Cylindrical Plug ■ Inch and Metric Sizes

Plain Gages



All Greenfield cylindrical plug gages are made to American Gage Design Standards and are precision lapped for overall accuracy, finish and wearability of the gaging surface.

Selection of gage tolerance should be in relation to the amount of tolerance on the product being gaged. The normal rule of thumb is that gage tolerance should not exceed 10% of the product tolerance equally divided between the GO and NO GO conditions.

These gages are furnished in four classes of tolerance.

Class XX: used where product limits are extremely close or for master gages.

Class X: used where product limits are relatively close, or occasionally for master gages.

Class Y: used where product limits are normal to liberal.

Class Z: used where product limits are quite liberal.

Application of Tolerances

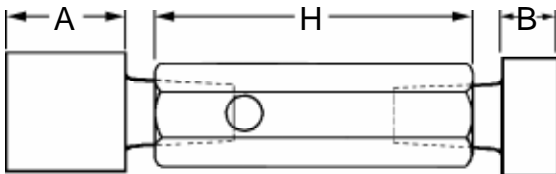
Unless otherwise specified

GO = Plus

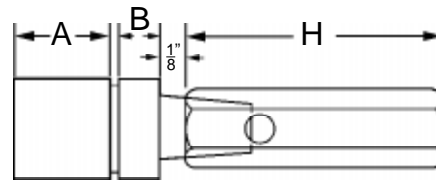
NO GO = Minus

Master Taper Lock Gage – 1620

General Dimensions



The shanks on the gaging members are tapered to fit corresponding taper holes in the handles. Worn members may be removed and the handle salvaged for use with new members.



Gaging lengths for progressive style may vary from table below.

Size Ranges		Tolerances (inches)				A Length GO Member	B Length NO GO Member	Handle		
Inches	mm	XX	X	Y	Z			No.	H Length	Hex
.040 - .105	1.02 - 2.67	.00002	.00004	.00007	.00010	3/8	3/16	000	1 1/2	3/16
.105 - .150	2.67 - 3.81	.00002	.00004	.00007	.00010	3/8	7/32	00	1 3/4	1/4
.150 - .240	3.81 - 6.10	.00002	.00004	.00007	.00010	13/32	9/32	0	2	5/16
.240 - .365*	6.10 - 9.27	.00002	.00004	.00007	.00010	3/4	5/16	1	2 3/4	3/8
.365 - .510	9.27 - 12.95	.00002	.00004	.00007	.00010	1	3/8	2	3	1/2
.510 - .825	12.95 - 20.96	.00002	.00004	.00007	.00010	1 1/4	1/2	3	3 1/4	11/16
.825 - 1.135	20.96 - 28.83	.00003	.00006	.00009	.00012	1 1/2	5/8	4	3 5/8	7/8
1.135 - 1.510	28.83 - 38.35	.00003	.00006	.00009	.00012	1 5/8	3/4	5	4	1

Reversible style on pages 18 and 19 recommended for sizes smaller than .240. Sizes smaller than .040 are available in reversible only.

Taper Lock ■ Steel or Chrome Plated Cylindrical Plug ■ Inch and Metric Sizes



Plain Gages

Size Range Inches mm Above - To	Class	Taperlock Steel						1611 GO & NO GO w/handle	Progressive Steel			1610 Member w/handle	Handle Only	
		1602 GO Member			1603 NO GO Member				1610 Member				No.	Price
		1	2	3-5	1	2	3-5		1	2	3-5			
.040 - .1049" 1.016 - 2.664mm	XX	49.50	47.10	44.60	45.80	43.50	41.10	103.30	104.90	99.70	94.50	112.90	000	8.00
	X	41.10	39.10	37.10	37.70	35.90	34.00	86.80	86.70	82.40	78.00	94.70	000	8.00
	Y	37.80	36.00	34.10	34.80	33.00	31.20	80.60	79.90	75.90	71.80	87.90	000	8.00
	Z	35.90	34.10	32.20	33.00	31.40	29.70	76.90	75.80	72.10	68.20	83.80	000	8.00
.105 - .1499" 2.667 - 3.807mm	XX	42.40	40.30	38.20	39.40	37.40	35.50	89.80	90.00	85.50	81.00	98.00	00	8.00
	X	35.00	33.30	31.50	32.80	31.20	29.50	75.80	74.40	70.70	67.00	82.40	00	8.00
	Y	32.20	30.60	29.00	30.50	29.00	27.50	70.70	69.00	65.60	62.10	77.00	00	8.00
	Z	30.70	29.20	27.60	28.80	27.40	25.90	67.50	65.50	62.20	59.00	73.50	00	8.00
.150 - .1849" 3.810 - 4.696mm	XX	41.00	39.00	36.90	37.60	35.70	33.80	86.60	86.50	82.20	77.90	94.50	0	8.00
	X	34.10	32.40	30.70	31.60	30.00	28.40	73.70	72.20	68.60	65.00	80.20	0	8.00
	Y	30.70	29.20	27.60	28.80	27.40	25.90	67.50	65.50	62.20	59.00	73.50	0	8.00
	Z	29.30	27.80	26.40	27.20	25.80	24.50	64.50	62.20	59.10	56.00	70.20	0	8.00
.185 - .2399" 4.699 - 6.093mm	XX	39.80	37.80	35.80	36.80	35.00	33.10	84.60	84.20	80.00	75.80	92.20	0	8.00
	X	32.70	31.10	29.40	30.50	29.00	27.50	71.20	69.50	66.00	62.60	77.50	0	8.00
	Y	30.10	28.60	27.10	27.90	26.50	25.10	66.00	63.90	60.70	57.50	71.90	0	8.00
	Z	28.70	27.30	25.80	26.40	25.10	23.80	63.10	60.60	57.60	54.50	68.60	0	8.00
.240 - .3649" 6.096 - 9.268mm	XX	39.80	37.80	35.80	36.80	35.00	33.10	84.60	84.20	80.00	75.80	92.20	1	8.00
	X	32.70	31.10	29.40	30.50	29.00	27.50	71.20	69.50	66.00	62.60	77.50	1	8.00
	Y	30.10	28.60	27.10	27.90	26.50	25.10	66.00	63.90	60.70	57.50	71.90	1	8.00
	Z	28.70	27.30	25.80	26.40	25.10	23.80	63.10	60.60	57.60	54.50	68.60	1	8.00
.365 - .5099" 9.271 - 12.951mm	XX	42.40	40.30	38.20	39.40	37.40	35.50	89.80	90.00	85.50	81.00	98.00	2	8.00
	X	35.00	33.30	31.50	32.80	31.20	29.50	75.80	74.40	70.70	67.00	82.40	2	8.00
	Y	32.20	30.60	29.00	30.50	29.00	27.50	70.70	69.00	65.60	62.10	77.00	2	8.00
	Z	30.70	29.20	27.60	28.80	27.40	25.90	67.50	65.50	62.20	59.00	73.50	2	8.00
.510 - .8249" 12.954 - 20.952mm	XX	46.80	44.50	42.10	43.30	41.10	39.00	98.10	99.20	94.20	89.30	107.20	3	8.00
	X	39.30	37.30	35.40	35.90	34.10	32.30	83.20	82.70	78.60	74.40	90.70	3	8.00
	Y	35.70	33.90	32.10	33.30	31.60	30.00	77.00	75.90	72.10	68.30	83.90	3	8.00
	Z	34.00	32.30	30.60	31.60	30.00	28.40	73.60	72.10	68.50	64.90	80.10	3	8.00
.825 - 1.1349" 20.955 - 28.826mm	XX	53.40	50.70	48.10	49.20	46.70	44.30	111.60	112.80	107.20	101.50	121.80	4	9.00
	X	44.70	42.50	40.20	41.10	39.00	37.00	94.80	94.40	89.70	85.00	103.40	4	9.00
	Y	40.10	38.10	36.10	37.60	35.70	33.80	86.70	85.50	81.20	77.00	94.50	4	9.00
	Z	37.90	36.00	34.10	35.60	33.80	32.00	82.50	80.90	76.90	72.80	89.90	4	9.00
1.135 - 1.510" 28.829 - 38.354mm	XX	60.90	57.90	54.80	56.70	53.90	51.00	126.60	129.60	123.10	116.60	138.60	5	9.00
	X	50.90	48.40	45.80	47.20	44.80	42.50	107.10	107.90	102.50	97.10	116.90	5	9.00
	Y	45.50	43.20	41.00	42.00	39.90	37.80	96.50	96.30	91.50	86.70	105.30	5	9.00
	Z	43.10	40.90	38.80	39.70	37.70	35.70	91.80	91.00	86.50	81.90	100.00	5	9.00

Handles are not included with single members. If handles are required with either GO or NO GO members, specify "with handle."
Carbide is available upon request. Add 30% to members for chrome.



Trilock

- Steel or Chrome Plated Cylindrical Plug
- Inch and Metric Sizes

Plain Gages



1631 Double End

Trilock cylindrical plug gages are reversible. When worn out at one end, they may be reversed on the specially designed handle and the unused end put into use.

Made to American Gage Design Standards, all gages are precision lapped.

Selection of gage tolerance should be in relation to the amount of tolerance on the product being gaged. The normal rule of thumb is that the gage tolerance should not exceed 10% of the product tolerance.

Furnished in four classes of tolerance:

Class XX: used where product limits are extremely close or for master gages.

Class X: used where product limits are relatively close, or occasionally for master gages.

Class Y: used where product limits are normal to liberal.

Class Z: used where product limits are quite liberal.

Application of Tolerances

Unless otherwise specified

GO = Plus

NO GO = Minus

Master = Bilateral

Master Trilock Gage – 1619

General Dimensions

Three wedge-shaped prongs at the end of the hexagon handle engage in corresponding grooves in the gaging member through which runs a locking screw.



Size Ranges		Tolerances (inches)				A	B	Handle		
Inches	mm	XX	X	Y	Z	Length GO Member	Length NO GO Member	No.	H Length	Hex
.760 - .825	19.30 - 20.96	.00002	.00004	.00007	.00010	1 1/4	3/4	2 1/2	4	1/2
.825 - .947	20.96 - 24.05	.00003	.00006	.00009	.00012	1 1/4	3/4	2 1/2	4	1/2
.947 - 1.135	24.05 - 28.83	.00003	.00006	.00009	.00012	1 3/8	3/4	3 1/2	4	5/8
1.135 - 1.510	28.83 - 38.35	.00003	.00006	.00009	.00012	1 1/2	3/4	4 1/2	4	13/16
1.510 - 2.010	38.35 - 51.05	.00004	.00008	.00012	.00016	1 7/8	7/8	5 1/2	4 1/2	1
2.010 - 2.510	51.05 - 63.75	.00004	.00008	.00012	.00016	2	7/8	6	5	1 1/8
2.510 - 3.010	63.75 - 76.45	.00005	.00010	.00015	.00020	2	1	7	6	1 1/4
3.010 - 4.510	76.45 - 114.55	.00005	.00010	.00015	.00020	2 1/8*	1	7	6	1 1/4
4.510 - 6.510	114.55 - 165.35	.000065	.00013	.00019	.00025	2 1/8	1	7	6	1 1/4
6.510 - 8.010	165.35 - 203.45	.00008	.00016	.00024	.00032	2 1/8	1	7	6	1 1/4

Size Range Inches - mm Above - To	Class	Steel						1631 Complete D.E. Gage	Handle only	
		1622 GO member			1623 NO GO member				No.	Price
		1	2	3-5	1	2	3-5			
.760 - .8259'' 19.304 - 20.878mm	XX	50.60	48.10	45.50	45.50	43.20	41.00	107.10	2-1/2	11.00
	X	42.40	40.30	38.20	38.20	36.30	34.30	91.60		
	Y	37.20	35.30	33.40	33.40	31.80	30.10	81.60		
	Z	33.60	31.90	30.30	30.30	28.70	27.30	74.90		
.826 - 1.0009'' 20.980 - 24.422mm	XX	57.60	54.80	51.90	51.90	49.30	46.80	120.50	2-1/2	11.00
	X	48.10	45.70	43.20	43.20	41.00	38.90	102.30		
	Y	41.30	39.20	37.20	37.20	35.30	33.40	89.50		
	Z	37.50	35.60	33.80	33.80	32.10	30.40	82.30		
1.001 - 1.1359'' 25.425 - 28.852mm	XX	57.60	54.80	51.90	51.90	49.30	46.80	120.50	3-1/2	11.00
	X	48.10	45.70	43.20	43.20	41.00	38.90	102.30		
	Y	41.30	39.20	37.20	37.20	35.30	33.40	89.50		
	Z	37.50	35.60	33.80	33.80	32.10	30.40	82.30		
1.136 - 1.5109'' 28.854 - 38.377mm	XX	65.90	62.60	59.30	59.30	56.30	53.40	137.20	4-1/2	12.00
	X	49.90	47.40	44.90	44.90	42.70	40.40	106.80		
	Y	42.70	40.60	38.40	38.40	36.50	34.60	93.10		
	Z	38.70	36.80	34.80	34.80	33.10	31.30	85.50		
1.511 - 1.7609'' 38.3794 - 44.727mm	XX	81.70	77.60	73.50	73.50	69.80	66.20	169.20	5-1/2	14.00
	X	69.00	65.50	62.10	62.10	58.90	55.90	145.10		
	Y	60.80	57.80	54.70	54.70	52.00	49.20	129.50		
	Z	59.50	56.60	53.60	53.60	50.90	48.20	127.10		
1.761 - 2.0109'' 44.729 - 51.077mm	XX	93.30	88.70	84.00	84.00	79.80	75.60	191.30	5-1/2	14.00
	X	77.70	73.80	69.90	69.90	66.50	62.90	161.60		
	Y	68.00	64.70	61.20	61.20	58.20	55.10	143.20		
	Z	66.60	63.20	60.00	60.00	56.90	54.00	140.60		
2.011 - 2.2609'' 51.080 - 57.427mm	XX	103.60	98.50	93.20	93.20	88.60	83.90	211.80	6	15.00
	X	86.30	82.00	77.70	77.70	73.80	69.90	179.00		
	Y	75.50	71.70	67.90	67.90	64.60	61.10	158.40		
	Z	73.80	70.10	66.50	66.50	63.10	59.90	155.30		
2.261 - 2.5109'' 57.420 - 63.777mm	XX	113.10	107.40	101.70	101.70	96.70	91.60	229.80	6	15.00
	X	94.40	89.70	84.90	84.90	80.70	76.40	194.30		
	Y	82.80	78.80	74.60	74.60	70.90	67.10	172.40		
	Z	80.70	76.80	72.70	72.70	69.00	65.40	168.40		
2.511 - 2.7609'' 63.779 - 70.127mm	XX	123.10	116.90	110.80	110.80	105.30	99.70	249.90	7	16.00
	X	102.50	97.40	92.30	92.30	87.70	83.10	210.80		
	Y	85.80	81.50	77.20	77.20	73.30	69.50	179.00		
	Z	83.90	79.70	75.50	75.50	71.70	68.00	175.40		
2.761 - 3.0109'' 70.130 - 76.477mm	XX	133.10	126.40	119.80	119.80	113.80	107.80	268.90	7	16.00
	X	111.00	105.50	99.90	99.90	94.90	89.90	226.90		
	Y	92.80	88.20	83.50	83.50	79.30	75.20	192.30		
	Z	90.80	86.30	81.70	81.70	77.60	73.50	188.50		
3.011 - 3.2609'' 76.480 - 82.827mm	XX	143.80	136.60	129.40	129.40	122.90	116.50	289.20	7	16.00
	X	120.10	114.10	108.10	108.10	102.70	97.30	244.20		
	Y	100.40	95.40	90.40	90.40	85.90	81.40	206.80		
	Z	98.40	93.50	88.60	88.60	84.20	79.70	203.00		
3.261 - 3.5109'' 82.830 - 89.177mm	XX	155.50	147.70	140.00	140.00	133.00	126.00	311.50	7	16.00
	X	129.50	123.00	116.60	116.60	110.80	104.90	262.10		
	Y	108.40	103.00	97.60	97.60	92.70	87.80	222.00		
	Z	105.90	100.60	95.30	95.30	90.50	85.80	217.20		
3.511 - 3.7609'' 89.180 - 95.527mm	XX	162.00	153.90	145.80	145.80	138.50	131.20	323.80	7	16.00
	X	135.20	128.40	121.70	121.70	115.60	109.50	272.90		
	Y	113.10	107.40	101.80	101.80	96.70	91.60	230.90		
	Z	110.60	105.10	99.50	99.50	94.50	89.60	226.10		
3.761 - 4.0109'' 95.530 - 101.877mm	XX	179.20	170.20	161.30	161.30	153.20	145.20	356.50	7	16.00
	X	149.40	141.90	134.50	134.50	127.80	121.10	299.90		
	Y	124.90	118.70	112.40	112.40	106.80	101.20	253.30		
	Z	122.30	116.20	110.10	110.10	104.60	99.10	248.40		
4.011 - 4.2609'' 101.880 - 108.227mm	XX	192.30	182.70	173.10	173.10	164.40	155.80	381.40	7	16.00
	X	160.20	152.20	144.20	144.20	137.00	129.80	320.40		
	Y	133.80	127.10	120.40	120.40	114.40	108.40	270.20		
	Z	130.80	124.30	117.70	117.70	111.80	105.90	264.50		
4.261 - 4.5109'' 108.230 - 114.577mm	XX	205.10	194.80	184.60	184.60	175.40	166.10	405.70	7	16.00
	X	170.90	162.40	153.80	153.80	146.10	138.40	340.70		
	Y	143.20	136.00	128.90	128.90	122.50	116.00	288.10		
	Z	139.80	132.80	125.80	125.80	119.50	113.20	281.60		

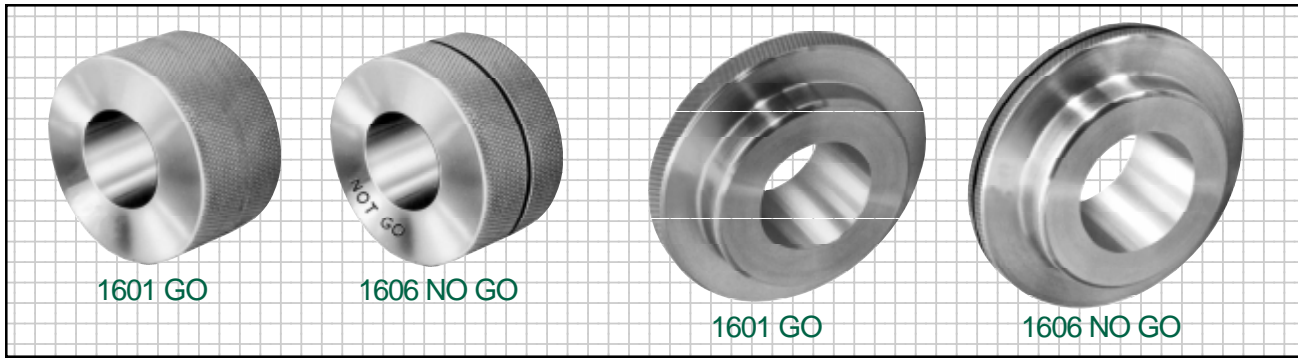
Handles are not included with single members. If handles are required with either GO or NO GO members, specify "with handles."

Add 30% to members for chrome.
© 2001 Kennametal Inc.



■ Steel or Chrome Plated Cylindrical Ring
 ■ Inch and Metric Sizes

Plain Gages



All Greenfield cylindrical ring gages are made to American Gage Design Standards and are precision lapped for overall accuracy, finish and wearability of the gaging surface.

Chrome-plated or carbide gages also available.

Selection of gage tolerance should be in relation to the amount of tolerance on the product being gaged. The normal rule of thumb is that the gage tolerance should not exceed 10% of the product tolerance.

These gages are furnished in four classes of tolerance:

Class XX: used where product limits are extremely close or for master gages.

Class X: used where product limits are relatively close, or occasionally for master gages.

Class Y: used where product limits are normal to liberal.

Class Z: used where product limits are quite liberal.

Application of Tolerances

Unless otherwise specified

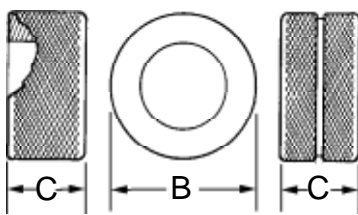
GO = Plus

NO GO = Minus

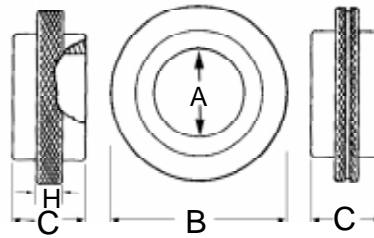
Master = Bilateral

Master Trilock Gage – 1607

General Dimensions



Furnished in sizes up to and including 1.510 inches. The NO GO ring is identified by the groove around the outside diameter.



Furnished in sizes above 1.510 inches with a flange to reduce weight and increase rigidity.

Size Ranges		Tolerances (inches)				B	C	H	Blank No.
Inches Above-To	mm Above-To	Classes				Outside Diameter	Thickness	Flange Thickness	
		XX	X	Y	Z				
.059 - .150	1.50 - 3.81	.00002	.00004	.00007	.00010	15/16	3/16	—	00
.150 - .240	3.81 - 6.10	.00002	.00004	.00007	.00010	15/16	3/8	—	0
.240 - .365	6.10 - 9.27	.00002	.00004	.00007	.00010	1 1/8	9/16	—	1
.365 - .510	9.27 - 12.95	.00002	.00004	.00007	.00010	1 3/8	3/4	—	2
.510 - .825	12.95 - 20.96	.00002	.00004	.00007	.00010	1 3/4	15/16	—	3
.825 - 1.135	20.96 - 28.83	.00003	.00006	.00009	.00012	2 1/8	1 1/8	—	4
1.135 - 1.510	28.83 - 38.35	.00003	.00006	.00009	.00012	2 1/2	1 5/16	—	5
1.510 - 2.010	38.35 - 51.05	.00004	.00008	.00012	.00016	4	1 1/2	1/2	6
2.010 - 2.510	51.05 - 63.75	.00004	.00008	.00012	.00016	4 1/2	1 1/2	9/16	7
2.510 - 3.010	63.75 - 76.45	.00005	.00010	.00015	.00020	5	1 1/2	5/8	8
3.010 - 3.510	76.45 - 89.15	.00005	.00010	.00015	.00020	5 1/2	1 1/2	11/16	9
3.510 - 4.010	89.15 - 101.85	.00005	.00010	.00015	.00020	6 3/8	1 1/2	3/4	10
4.010 - 4.510	101.85 - 114.55	.00005	.00010	.00015	.00020	7 1/4	1 1/2	7/8	11
4.510 - 4.760	114.55 - 120.90	.00005	.00013	.00019	.00025	7 1/4	1 1/2	7/8	11

■ Steel or Chrome Plated Cylindrical Ring
■ Inch and Metric Sizes



Size Range Inches / mm Above - To	Class	Steel			Chrome Plated *		
		1	2	3-5	1	2	3-5
.060 - .105" 1.524 - 2.667mm	XX	101.40	96.30	91.30	Not Available		
	X	88.80	84.40	79.90			
	Y	74.90	71.20	67.40			
	Z	73.30	69.60	66.00			
.106 - .150" 2.668 - 3.810mm	XX	87.60	83.20	78.80	Not Available		
	X	77.20	73.30	69.50			
	Y	68.00	64.60	61.20			
	Z	63.00	59.90	56.70			
.151 - .240" 3.811 - 6.096mm	XX	85.70	81.40	77.10	Not Available		
	X	73.00	69.40	65.70			
	Y	57.50	54.60	51.80			
	Z	54.20	51.50	48.80			
.241 - .365" 6.097 - 9.27mm	XX	87.80	83.40	79.00	131.70	125.10	118.50
	X	76.80	73.00	69.10	115.20	109.50	103.70
	Y	58.60	55.70	52.70	87.90	83.60	79.10
	Z	55.70	52.90	50.10	83.60	79.40	75.20
.366 - .510" 9.28 - 12.95mm	XX	94.40	89.70	85.00	141.60	134.60	127.50
	X	80.60	76.60	72.50	120.90	114.90	108.80
	Y	63.30	60.10	57.00	95.00	90.20	85.50
	Z	59.20	56.20	53.30	88.80	84.30	80.00
.511 - .825" 12.96 - 20.96mm	XX	103.70	98.50	93.30	155.60	147.80	140.00
	X	87.70	83.30	78.90	131.60	125.00	118.40
	Y	70.40	66.90	63.40	105.60	100.40	95.10
	Z	64.10	60.90	57.70	96.20	91.40	86.60
.826 - 1.135" 20.97 - 28.83mm	XX	115.30	109.50	103.80	173.00	164.30	155.70
	X	97.20	92.30	87.50	145.80	138.50	131.30
	Y	75.00	71.30	67.50	112.50	107.00	101.30
	Z	73.50	69.80	66.20	110.30	104.70	99.30
1.136 - 1.510" 28.94 - 38.35mm	XX	130.60	124.10	117.50	195.90	186.20	176.30
	X	109.30	103.80	98.40	164.00	155.70	147.60
	Y	95.90	91.10	86.30	143.90	136.70	129.50
	Z	89.40	84.90	80.50	134.10	127.40	120.80
1.511 - 2.010" 38.36 - 51.05mm	XX	179.60	170.60	161.60	269.40	255.90	242.40
	X	159.50	151.50	143.60	239.30	227.30	215.40
	Y	138.40	131.50	124.60	207.60	197.30	186.90
	Z	131.10	124.50	118.00	196.70	186.80	177.00
2.011 - 2.510" 51.06 - 63.75mm	XX	213.70	203.00	192.30	320.60	304.50	288.50
	X	189.70	180.20	170.70	284.60	270.30	256.10
	Y	164.30	156.10	147.90	246.50	234.20	221.90
	Z	154.20	146.50	138.80	231.30	219.80	208.20
2.511 - 3.010" 63.76 - 76.45mm	XX	246.60	234.30	221.90	369.90	351.50	332.90
	X	219.80	208.80	197.80	329.70	313.20	296.70
	Y	191.60	182.00	172.40	287.40	273.00	258.60
	Z	178.90	170.00	161.00	268.40	255.00	241.50
3.011 - 3.510" 76.46 - 89.15mm	XX	287.40	273.00	258.70	431.10	409.50	388.10
	X	256.20	243.40	230.60	384.30	365.10	345.90
	Y	223.90	212.70	201.50	335.90	319.10	302.30
	Z	207.70	197.30	186.90	311.60	296.00	280.40
3.511 - 4.010" 89.16 - 101.85mm	XX	331.70	315.10	298.50	497.60	472.70	447.80
	X	292.20	277.60	263.00	438.30	416.40	394.50
	Y	256.20	243.40	230.60	384.30	365.10	345.90
	Z	236.80	225.00	213.10	355.20	337.50	319.70
4.011 - 4.760" 101.86 - 120.9mm	XX	372.10	353.50	334.90	558.20	530.30	502.40
	X	328.10	311.70	295.30	492.20	467.60	443.00
	Y	287.40	273.00	258.70	431.10	409.50	388.10
	Z	264.90	251.70	238.40	397.40	377.60	357.60

Larger sizes available upon request.

Carbide is available upon request.

*Chrome plated cylindrical ring gages not available below .250" diameter.



Plain Snap Gages

- Adjustable Limit-Snap
- Inch and Metric Sizes



Frame No.	Model SC Capacity		1616 EDP No.	Unset Price	Set & Sealed Price
	Inches	mm			
1	0-1/4	0-6.4	701092	97.00	112.00
2	1/4-1/2	6.4-12.7	701093	99.00	114.00
2A	1/2-3/4	12.7-19.1	701094	99.00	114.00
3	3/4-1	19.1-25.4	701095	103.00	118.00
3A	1-1 1/4	25.4-31.8	701096	103.00	118.00
4	1 1/4-1 1/2	31.8-38.1	701097	108.00	123.00
4A	1 1/2-1 3/4	38.1-44.5	701098	108.00	123.00
5	1 3/4-2	44.5-50.8	701099	111.00	126.00
5A	2-2 1/4	50.8-57.2	701100	111.00	126.00
6	2 1/4-2 1/2	57.2-63.5	701101	118.00	133.00
6A	2 1/2-2 3/4	63.5-69.9	701102	118.00	133.00
7	2 3/4-3 1/16	69.9-77.8	701103	129.00	144.00
7A	3 1/16-3 7/16	77.8-87.3	701104	129.00	144.00
8	3 7/16-3 13/16	87.3-96.8	701105	141.00	156.00
8A	3 13/16-4 3/16	96.8-106.4	701106	141.00	156.00
9	4 3/16-4 9/16	106.4-115.9	701107	165.00	180.00
9A	4 9/16-4 15/16	115.9-125.4	701108	165.00	180.00
10	4 15/16-5 5/16	125.4-134.9	701109	196.00	211.00
10A	5 5/16-5 11/16	134.9-144.5	701110	196.00	211.00
11	5 11/16-6 1/8	144.5-155.6	701111	255.00	270.00
11A	6 1/8-6 5/8	155.6-168.3	701112	255.00	270.00
12	6 5/8-7 1/8	168.3-181.0	701113	292.00	307.00
12A	7 1/8-7 5/8	181.0-193.7	701114	292.00	307.00
13	7 5/8-8 1/8	193.7-206.4	701115	323.00	338.00
13A	8 1/8-8 5/8	206.4-219.1	701116	323.00	338.00
14	8 5/8-9 1/8	219.1-231.8	701117	344.00	359.00
14A	9 1/8-9 5/8	231.8-244.5	701118	344.00	359.00
15	9 5/8-10 1/8	244.5-257.2	701119	383.00	398.00
15A	10 1/8-10 5/8	257.2-269.9	701120	383.00	398.00
16	10 5/8-11 1/8	269.9-282.6	701121	412.00	427.00
16A	11 1/8-11 5/8	282.6-295.3	701122	412.00	427.00

Frame No.	Model A Capacity		1612 EDP No.	Unset Price	Set & Sealed Price
	Inches	mm			
1	0-1/2	0-12.7	39115	86.00	106.00
2	1/2-1	12.7-25.4	39116	89.00	109.00
3	1-1 1/2	25.4-38.1	39117	92.00	112.00
4	1 1/2-2	38.1-50.8	39118	98.00	118.00
5	2-2 1/2	50.8-63.5	39119	105.00	125.00
6	2 1/2-3	63.5-76.2	39120	111.00	131.00
7	3-3 3/4	76.2-95.3	39121	117.00	137.00
8	3 3/4-4 1/2	95.3-114.3	39122	129.00	149.00
9	4 1/2-5 1/4	114.3-133.4	39123	150.00	170.00
10	5 1/4-6	133.4-152.4	39124	170.00	190.00

Frame No.	Model SMC Capacity		1617 EDP No.	Unset Price	Set & Sealed Price
	Inches	mm			
00	.00-.195	0-5.0	701136	123.00	138.00
00A	.195-.385	5.0-9.8	701137	123.00	138.00
0	.385-.570	9.8-14.5	701138	133.00	148.00
0A	.570-.760	14.5-19.3	701139	133.00	148.00

1633 Snap Gage Holder

This stand will take all sizes of plain and thread gage frames equally well. When ordering, specify frame number.
 EDP NO. **39320**
 Price Each \$89.00

When ordering, please use EDP numbers.

Master Discs

■ Steel and Chrome Plated



Plain Gages



Size Range Inches mm Above - To	Class	1685 Style No. 1			1690 Style No. 2			1695 Style No. 3		
		Length	Steel	Chrome	Length	Steel	Chrome	Length	Steel	Chrome
.150 - .229" 3.81 - 5.84mm	XX		82.70	107.50		140.20	182.30		75.50	98.20
	X	7/8"	63.90	83.10	7/8"	109.50	142.40	7/16"	59.00	76.70
	Y	22.2mm	59.00	76.70	22.2mm	97.60	126.90	11.1mm	54.80	71.20
.230 - .364" 5.84 - 9.27mm	XX		82.70	107.50		140.20	182.30		75.50	98.20
	X	1"	63.90	83.10	1"	109.50	142.40	1/2"	59.00	76.70
	Y	25.4mm	59.00	76.70	25.4mm	97.60	126.90	12.7mm	54.80	71.20
.365 - .509" 9.27 - 12.95mm	XX		85.20	110.80		143.70	186.80		78.80	102.40
	X	1 1/8"	66.50	86.50	1 1/8"	112.00	145.60	9/16"	61.40	79.80
	Y	28.6mm	61.40	79.80	28.6mm	104.30	135.60	14.3mm	57.30	74.50
.510 - .824" 12.95 - 20.96mm	XX		86.90	113.00		144.80	188.20		80.30	104.40
	X	1 1/4"	68.10	88.50	1 1/4"	113.90	148.10	5/8"	63.20	82.20
	Y	31.8mm	63.20	82.20	31.8mm	105.80	137.50	15.9mm	59.00	76.70
.825 - 1.134" 20.96 - 28.83mm	XX		93.10	121.00		161.30	209.70		86.90	113.00
	X	1 3/8"	74.00	96.20	1 3/8"	134.50	174.90	11/16"	68.10	88.50
	Y	34.9mm	69.00	89.70	34.9mm	123.70	160.80	17.5mm	63.90	83.10
1.135 - 1.509" 28.83 - 38.35mm	XX		102.80	133.60		178.80	232.40		93.90	122.10
	X	1 5/8"	80.00	104.00	1 5/8"	139.50	181.40	13/16"	73.20	95.20
	Y	41.3mm	74.00	96.20	41.3mm	127.90	166.30	20.6mm	67.10	87.20
1.510 - 2.009" 38.35 - 51.05mm	XX		118.10	153.50		201.00	261.30		108.70	141.30
	X	1 7/8"	91.00	118.30	2"	157.90	205.30	7/8"	84.40	109.70
	Y	47.6mm	80.00	104.00	50.8mm	142.10	184.70	22.2mm	75.10	97.60
2.010 - 2.509" 51.05 - 63.75mm	XX		135.60	176.30		237.20	308.40		126.30	164.20
	X	2"	104.30	135.60	2"	183.60	238.70	7/8"	98.40	127.90
	Y	50.8mm	94.20	122.50	50.8mm	159.20	207.00	22.2mm	84.40	109.70
2.510 - 3.009" 63.75 - 76.45mm	XX		156.60	203.60		273.40	355.40		143.80	186.90
	X	2"	128.60	167.20	2 1/4"	213.00	276.90	1"	112.40	146.10
	Y	50.8mm	110.00	143.00	57.2mm	182.40	237.10	25.4mm	96.20	125.10
3.010 - 3.509" 76.45 - 89.15mm	XX		177.60	230.90		321.40	417.80		167.20	217.40
	X	2"	140.80	183.00	2 1/4"	253.40	329.40	1"	132.20	171.90
	Y	50.8mm	123.70	160.80	57.2mm	219.10	284.80	25.4mm	109.50	142.40
3.510 - 4.009" 89.15 - 101.85mm	XX		206.80	268.80		346.00	449.80		177.60	230.90
	X	2 1/8"	161.60	210.10	2 1/4"	286.40	372.30	1"	150.60	195.80
	Y	54.0mm	140.80	183.00	57.2mm	244.90	318.40	25.4mm	127.30	165.50
4.010 - 4.510" 101.85 - 114.55mm	XX		234.90	305.40		377.50	490.80		195.10	253.60
	X	2 1/8"	186.10	241.90	2 1/4"	312.20	405.90	1"	161.60	210.10
	Y	54.0mm	166.80	216.80	57.2mm	277.90	361.30	25.4mm	145.60	189.30

Larger sizes available upon request.