

Fowler

Spline Micrometers—Inch & Metric



▲ No. 52-218-225.

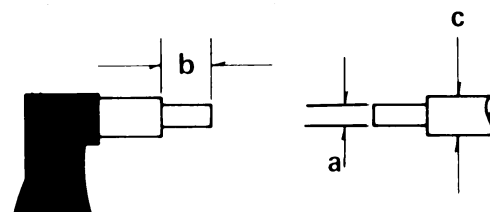


Use Fowler Spline Micrometers to accurately measure recesses, splines and grooves of forming tools. Available in either inch or metric models.

Special Features:

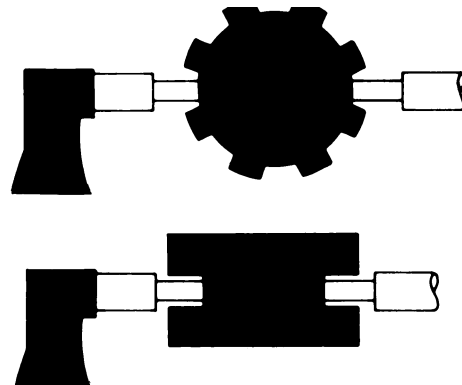
- Hammertone blue baked enamel frame.
- Microfine graduations on satin chrome finish for easy reading.
- Graduations = .0001" or .001mm.
- Anvil and spindle are hardened and precision ground with microlap finish on measuring faces.
- Positive lever locking clamp.
- Ratchet stop for exact readings.
- Flatness = .00002".
- Parallelism = .00005".
- Accuracy = .0001".
- Meets or exceeds U.S. Federal specifications for accuracy.
- Price includes fitted case.

Technical Data



Dimensions: a) .118" b) .394" c) .256"

Spline Micrometer Applications



Order No.	Description	Graduation
Inch Series:		
52-218-111	0—1" Spline Micrometer	.0001"
52-218-112	1—2" Spline Micrometer	.0001"
Metric Series:		
52-218-225	0—25mm Spline Micrometer	.001mm
52-218-250	25—50mm Spline Micrometer	.001mm