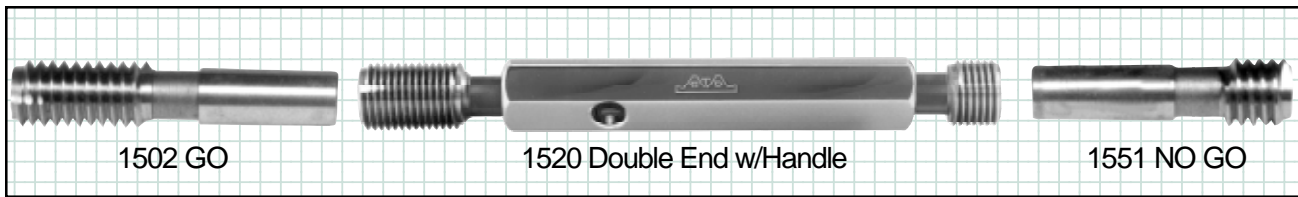




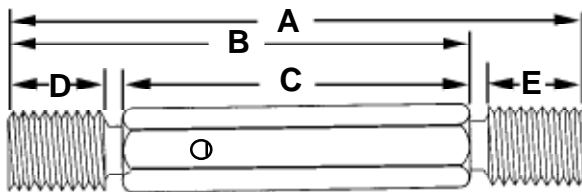
Taper Lock ■ Machine Screw and Fractional Sizes

Thread Plug Gages



Greenfield thread plug gages are made of selected steel, manufactured with the finest equipment available, and meticulously inspected in every thread element. The name Greenfield is your guarantee of the finest in thread gages. Standard in "X" tolerance.

General Dimensions



The shanks on the gaging members are tapered to fit corresponding taper holes in the handles. Worn members may be removed and the handles salvaged for use with new members.

Member sizes 0 - 6 have male point in addition to length shown.

Nominal Size		Length					Handle	
Inch	mm	A Overall	B GO Member & Handle	C Handle Only	D GO Member	E NOT GO (HI) Member	Hex. Size	No.
0, 1, 2, 3	1.6, 2, 2.5	2 1/2	2 1/32	1 1/2	1/4	3/16	3/16	000
4, 5, 6	3, 3.5	2 31/32	2 13/32	1 3/4	5/16	7/32	1/4	00
8, 10, 12	4, 4.5, 5	3 3/16	2 21/32	2	13/32	9/32	5/16	0
1/4, 5/16	6, 6.3, 7, 8	4 1/16	3 1/2	2 3/4	1/2	5/16	3/8	1
3/8, 7/16, 1/2	10, 12	4 5/8	4	3	3/4	3/8	1/2	2
9/16, 5/8, 3/4	14, 16, 18, 20	5 1/8	4 3/8	3 1/4	7/8	1/2	11/16	3
7/8, 1, 1 1/8	24	5 7/8	4 15/16	3 5/8	1	5/8	7/8	4
1 1/4, 1 3/8, 1 1/2		5 1/2 + D	4 3/8 + D	4	*	3/4	1	5

*D = 1" for 12 threads per inch and finer 1 1/4" for threads per inch coarser than 12
For EDP numbers and prices, see next page

Gages are Precision "Measuring" Tools... Handle Properly

- Clean the part before gaging.**
Get rid of dirt and chips.
- Do not force the gage.**
Use reasonably light pressure only.
- Protect the gage from damage.**
Nicks and burrs allow inaccurate results.
- Keep gage clean and lightly oiled.**
This increases wear life.
- Avoid handling gaging surfaces.**
Fingerprints cause rust.

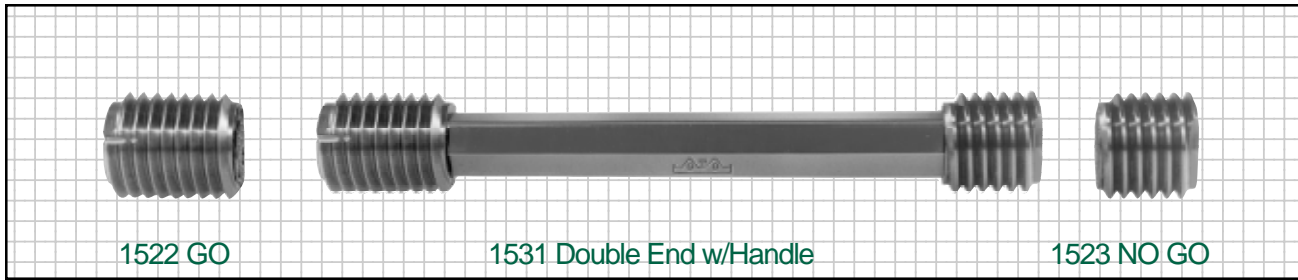


Nominal Size	1502 GO Member		1551 NO GO Member				1520 Double End w/Handle				Handle Only	
	EDP No.	Price	Class 2B		Class 3B		Class 2B		Class 3B		EDP No.	Price
			EDP No.	Price	EDP No.	Price	EDP No.	Price	EDP No.	Price		
0 80 UNF	150100	38.00	160100	38.00	170100	38.00	150116	84.00	150117	84.00	000	8.00
1 64 UNC	150200	38.00	160200	38.00	170200	38.00	150216	84.00	150217	84.00	000	8.00
72 UNF	150300	38.00	160300	38.00	170300	38.00	150316	84.00	150317	84.00	000	8.00
2 56 UNC	150400	38.00	160400	38.00	170400	38.00	150416	84.00	150417	84.00	000	8.00
64 UNF	150500	38.00	160500	38.00	170500	38.00	150516	84.00	150517	84.00	000	8.00
3 48 UNC	150600	34.00	160600	34.00	170600	34.00	150616	76.00	150617	76.00	000	8.00
56 UNF	150700	34.00	160700	34.00	170700	34.00	150716	76.00	150717	76.00	000	8.00
4 40 UNC	150900	34.00	160900	34.00	170900	34.00	150916	76.00	150917	76.00	00	8.00
48 UNF	151000	34.00	161000	34.00	171000	34.00	151016	76.00	151017	76.00	00	8.00
5 40 UNC	151100	29.00	161100	29.00	171100	29.00	151116	66.00	151117	66.00	00	8.00
44 UNF	151200	29.00	161200	29.00	171200	29.00	151216	66.00	151217	66.00	00	8.00
6 32 UNC	151300	29.00	161300	29.00	171300	29.00	151316	66.00	151317	66.00	00	8.00
40 UNF	151400	29.00	161400	29.00	171400	29.00	151416	66.00	151417	66.00	00	8.00
8 32 UNC	151500	29.00	161500	29.00	171500	29.00	151516	66.00	151517	66.00	0	8.00
36 UNF	151600	29.00	161600	29.00	171600	29.00	151616	66.00	151617	66.00	0	8.00
10 24 UNC	151700	29.00	161700	29.00	171700	29.00	151716	66.00	151717	66.00	0	8.00
32 UNF	151800	29.00	161800	29.00	171800	29.00	151816	66.00	151817	66.00	0	8.00
12 24 UNC	151900	29.00	161900	29.00	171900	29.00	151916	66.00	151917	66.00	0	8.00
28 UNF	152000	29.00	162000	29.00	172000	29.00	152016	66.00	152017	66.00	0	8.00
1/4 20 UNC	152200	24.00	162200	24.00	172200	24.00	152216	56.00	152217	56.00	1	8.00
28 UNF	152300	24.00	162300	24.00	172300	24.00	152316	56.00	152317	56.00	1	8.00
32 UNEF	152400	48.00	162400	48.00	172400	48.00	152416	104.00	152417	104.00	1	8.00
5/16 18 UNC	152500	24.00	162500	24.00	172500	24.00	152516	56.00	152517	56.00	1	8.00
24 UNF	152600	24.00	162600	24.00	172600	24.00	152616	56.00	152617	56.00	1	8.00
32 UNEF	152700	48.00	162700	48.00	172700	48.00	152716	104.00	152717	104.00	1	8.00
3/8 16 UNC	152800	26.00	162800	26.00	172800	26.00	152816	60.00	152817	60.00	2	8.00
24 UNF	152900	26.00	162900	26.00	172900	26.00	152916	60.00	152917	60.00	2	8.00
32 UNEF	153000	56.00	163000	56.00	173000	56.00	153016	120.00	153017	120.00	2	8.00
7/16 14 UNC	153100	26.00	163100	26.00	173100	26.00	153116	60.00	153117	60.00	2	8.00
20 UNF	153200	26.00	163200	26.00	173200	26.00	153216	60.00	153217	60.00	2	8.00
28 UNEF	153300	57.00	163300	57.00	173300	57.00	153316	122.00	153317	122.00	2	8.00
1/2 13 UNC	153400	29.00	163400	29.00	173400	29.00	153416	66.00	153417	66.00	2	8.00
20 UNF	153500	29.00	163500	29.00	173500	29.00	153516	66.00	153517	66.00	2	8.00
28 UNEF	153600	57.00	163600	57.00	173600	57.00	153616	122.00	153617	122.00	2	8.00
9/16 12 UNC	153700	37.00	163700	37.00	173700	37.00	153716	82.00	153717	82.00	3	8.00
18 UNF	153800	37.00	163800	37.00	173800	37.00	153816	82.00	153817	82.00	3	8.00
24 UNEF	153900	61.00	163900	61.00	173900	61.00	153916	130.00	153917	130.00	3	8.00
5/8 11 UNC	154000	37.00	164000	37.00	174000	37.00	154016	82.00	154017	82.00	3	8.00
18 UNF	154100	37.00	164100	37.00	174100	37.00	154116	82.00	154117	82.00	3	8.00
24 UNEF	154200	61.00	164200	61.00	174200	61.00	154216	130.00	154217	130.00	3	8.00
3/4 10 UNC	154400	41.00	164400	41.00	174400	41.00	154416	90.00	154417	90.00	3	8.00
16 UNF	154500	41.00	164500	41.00	174500	41.00	154516	90.00	154517	90.00	3	8.00
20 UNEF	154600	62.00	164600	62.00	174600	62.00	154616	132.00	154617	132.00	3	8.00
7/8 9 UNC	154800	43.00	164800	43.00	174800	43.00	154816	95.00	154817	95.00	4	9.00
14 UNF	154900	43.00	164900	43.00	174900	43.00	154916	95.00	154917	95.00	4	9.00
20 UNEF	155000	74.00	165000	74.00	175000	74.00	155016	157.00	155017	157.00	4	9.00
1 8 UNC	155200	50.00	165200	50.00	175200	50.00	155216	109.00	155217	109.00	4	9.00
12 UNF	155300	50.00	165300	50.00	175300	50.00	155316	109.00	155317	109.00	4	9.00
14 UNS	155400	50.00	165400	50.00	175400	50.00	155416	109.00	155417	109.00	4	9.00
20 UNEF	155500	78.00	165500	78.00	175500	78.00	155516	165.00	155517	165.00	4	9.00
1-1/8 7 UNC	155700	64.00	165700	64.00	175700	64.00	155716	137.00	155717	137.00	4	9.00
12 UNF	155800	64.00	165800	64.00	175800	64.00	155816	137.00	155817	137.00	4	9.00
1-1/4 7 UNC	156100	70.00	166100	70.00	176100	70.00	156116	149.00	156117	149.00	5	9.00
12 UNF	156200	70.00	166200	70.00	176200	70.00	156216	149.00	156217	149.00	5	9.00
1-3/8 6 UNC	156500	76.00	166500	76.00	176500	76.00	156516	161.00	156517	161.00	5	9.00
12 UNF	156600	76.00	166600	76.00	176600	76.00	156616	161.00	156617	161.00	5	9.00
1-1/2 6 UNC	156900	85.00	166900	85.00	176900	85.00	156916	179.00	156917	179.00	5	9.00
12 UNF	157000	85.00	167000	85.00	177000	85.00	157016	179.00	157017	179.00	5	9.00

Handles are not included with single members. If handles are required for GO or NO GO members, specify "with handle."

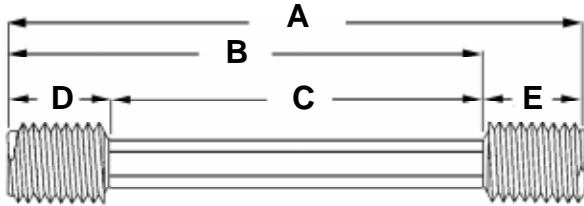
For chrome add 30%.

When ordering, please use EDP numbers.



Trilock Plug Gages are reversible. When worn out at one end, they may be reversed on the specially designed handle and the unused end put into use.

General Dimensions



Nominal Size	Length					Handle	
	A Overall	B GO Member & Handle	C Handle Only	D GO Member	E NO GO Member	Hex. Size	No.
7/8	5 3/4	5	4	1	3/4	1/2	2 1/2
1	5 7/8	5 1/8	4	1 1/8	3/4	5/8	3 1/2
1 1/8 - 7	6 1/8	5 3/8	4	1 3/8	3/4	5/8	3 1/2
1 1/8 - 12	5 7/8	5 1/8	4	1 1/8	3/4	5/8	3 1/2
1 1/4 - 7	5 7/8	5 1/2	4	1 1/8	3/4	13/16	4 1/2
1 1/4 - 12	6	5 1/4	4	1 1/4	3/4	13/16	4 1/2
1 3/8 - 6, 1 1/2 - 6	6 1/4	5 1/2	4	1 1/2	3/4	13/16	4 1/2
1 3/8 - 12, 1 1/2 - 12	6	5 1/4	4	1 1/4	3/4	13/16	4 1/2

Nominal Size	1522 GO Member		1523 NO GO Member Class 2B		1531 Double End w / Handle Class 2B		Handle Only		
	EDP No.	Price	EDP No.	Price	EDP No.	Price	No.	Price	
7/8	9 UN	104800	54.00	114800	54.00	104811	119.00	2-1/2	11.00
	14 UN	104900	54.00	114900	54.00	104911	119.00	2-1/2	11.00
1	8 UN	105200	60.00	115200	60.00	105211	131.00	3-1/2	11.00
	12 UN	105300	60.00	115300	60.00	105311	131.00	3-1/2	11.00
1-1/8	7 UN	105700	72.00	115700	72.00	105711	155.00	3-1/2	11.00
	12 UN	105800	72.00	115800	72.00	105811	155.00	3-1/2	11.00
1-1/4	7 UN	106100	81.00	116100	81.00	106111	174.00	4-1/2	12.00
	12 UN	106200	81.00	116200	81.00	106211	174.00	4-1/2	12.00
1-3/8	6 UN	106500	95.00	116500	95.00	106511	202.00	4-1/2	12.00
	12 UN	106600	95.00	116600	95.00	106611	202.00	4-1/2	12.00
1-1/2	6 UN	106900	110.00	116900	110.00	106911	232.00	4-1/2	12.00
	12 UN	107000	110.00	117000	110.00	107011	232.00	4-1/2	12.00

Handles are not included with single members. If handles are required for GO or NO GO members, specify "with handle."

Note: 3B Gages are available and priced the same as 2B Gages.

For chrome add 30%.

When ordering, please use EDP numbers.

■ **TiN Coated Taper Lock**
■ **Machine Screw and Fractional Sizes**



Greenfield Series 2000 gages feature Greenfield's high quality taper lock thread gages with a titanium nitride coating. Series 2000 gages are first made with the same care and accuracy all Greenfield gages display. Then we apply a thin coating of titanium nitride, offering an excellent, uniform hard coating with no loss of substrate hardness or physical distortion. The added hardness and lubricity of the coating gives you

- Greatly increased life. Surface hardness is greater than high speed steel.
- Increased corrosion and abrasion resistance due to the inert, hard characteristics of the coating.
- Reduced material build-up due to the added lubricity properties of the coating.

From start to finish Greenfield Series 2000 gages stretch your investment in quality.

Nominal Size	2556 GO Member		2551 NO GO Member				2520 Double End w / Handle				Handle Only	
	EDP No.	Price	Class 2B		Class 3B		Class 2B		Class 3B		No.	Price
4 40 UNC	450900	46.00	460900	46.00	470900	46.00	450946	100.00	450947	100.00	00	8.00
	451000	46.00	461000	46.00	471000	46.00	451046	100.00	451047	100.00	00	8.00
5 40 UNC	451100	41.00	461100	41.00	471100	41.00	451146	90.00	451147	90.00	00	8.00
	451200	41.00	461200	41.00	471200	41.00	451246	90.00	451247	90.00	00	8.00
6 32 UNC	451300	41.00	461300	41.00	471300	41.00	451346	90.00	451347	90.00	00	8.00
	451400	41.00	461400	41.00	471400	41.00	451446	90.00	451447	90.00	00	8.00
8 32 UNC	451500	41.00	461500	41.00	471500	41.00	451546	90.00	451547	90.00	00	8.00
	451600	41.00	461600	41.00	471600	41.00	451646	90.00	451647	90.00	0	8.00
10 24 UNC	451700	41.00	461700	41.00	471700	41.00	451746	90.00	451747	90.00	0	8.00
	451800	41.00	461800	41.00	471800	41.00	451846	90.00	451847	90.00	0	8.00
12 24 UNC	451900	41.00	461900	41.00	471900	41.00	451946	90.00	451947	90.00	0	8.00
	452000	41.00	462000	41.00	472000	41.00	452046	90.00	452047	90.00	0	8.00
1/4 20 UNC	452200	33.00	462200	33.00	472200	33.00	452246	74.00	452247	74.00	0	8.00
	452300	33.00	462300	33.00	472300	33.00	452346	74.00	452347	74.00	1	8.00
5/16 18 UNC	452500	33.00	462500	33.00	472500	33.00	452546	74.00	452547	74.00	1	8.00
	452600	33.00	462600	33.00	472600	33.00	452646	74.00	452647	74.00	1	8.00
3/8 16 UNC	452800	36.00	462800	36.00	472800	36.00	452846	80.00	452847	80.00	1	8.00
	452900	36.00	462900	36.00	472900	36.00	452946	80.00	452947	80.00	2	8.00
7/16 14 UNC	453100	36.00	463100	36.00	473100	36.00	453146	80.00	453147	80.00	2	8.00
	453200	36.00	463200	36.00	473200	36.00	453246	80.00	453247	80.00	2	8.00
1/2 13 UNC	453400	41.00	463400	41.00	473400	41.00	453446	90.00	453447	90.00	2	8.00
	453500	41.00	463500	41.00	473500	41.00	453546	90.00	453547	90.00	2	8.00

Helical Coil Gages (STI)

Available: Chrome and Titanium Nitride Coated
Reversible Design, Metric and other sizes

■ **Steel Taper Lock**

Nominal Size	2556 GO Member		2551 NO GO Member				2520 Double End w / Handle				Handle Only	
	EDP No.	Price	Class 2B		Class 3B		Class 2B		Class 3B		No.	Price
2 56 UNC	550400	59.00	560400	59.00	570400	59.00	550456	126.00	550457	126.00	00	8.00
4 10 UNC	550900	51.00	560900	51.00	570900	51.00	550956	110.00	550957	110.00	00	8.00
6 32 UNC	551300	46.00	561300	46.00	571300	46.00	551356	100.00	551357	100.00	0	8.00
8 32 UNC	551500	46.00	561500	46.00	571500	46.00	551556	100.00	551557	100.00	0	8.00
10 24 UNC	551700	46.00	561700	46.00	571700	46.00	551756	100.00	551757	100.00	0	8.00
	551800	46.00	561800	46.00	571800	46.00	551856	100.00	551857	100.00	0	8.00
1/4 20 UNC	552200	43.00	562200	43.00	572200	43.00	552256	94.00	552257	94.00	1	8.00
	552300	43.00	562300	43.00	572300	43.00	552356	94.00	552357	94.00	1	8.00
5/16 18 UNC	552500	43.00	562500	43.00	572500	43.00	552556	94.00	552557	94.00	1	8.00
	552600	43.00	562600	43.00	572600	43.00	552656	94.00	552657	94.00	1	8.00
3/8 16 UNC	552800	43.00	562800	43.00	572800	43.00	552856	94.00	552857	94.00	2	8.00
	552900	46.00	562900	46.00	572900	46.00	552956	100.00	552957	100.00	2	8.00
7/16 20 UNF	553200	46.00	563200	46.00	573200	46.00	553256	100.00	553257	100.00	2	8.00
1/2 13 UNC	553400	47.00	563400	47.00	573400	47.00	553456	102.00	553457	102.00	2	8.00
	553500	47.00	563500	47.00	573500	47.00	553556	102.00	553557	102.00	2	8.00

Handles are not included with single members. If handles are required for GO or NO GO members, specify "with handle."

For gage dimensions, refer to table on page 4. For chrome add 30%, W-tolerance 33.3%. Titanium is available upon request.

When ordering, please use EDP numbers.



Reversible ■ Machine Screw and Fractional Sizes

Thread Plug Gages

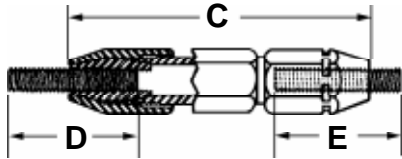


Reversible thread plug gages are straight and held to size over their entire length, which permits use of both ends. When worn at one end the member may be quickly reversed in the specially designed handle and the unused end put into use.

Made of selected steel, manufactured with the finest equipment available and meticulously inspected in every thread element.

Standard in "X" tolerance.

General Dimensions



The aluminum handles are made to American Gage Design. The gaging members are securely held by means of bushings compressed when the aluminum nuts are tightened. Handles are not included with single members. If handles are required for GO or NO GO members, specify "with handle."

When ordering, please use EDP numbers.

Nominal Size-Inch	Length			Handle	
	C Handle Only	D GO Member	E NO GO Member	Hex. Size	No.
0,1	1 29/32	1/2	1/2	1/4	1W
2,3,4,5	2 15/32	5/8	5/8	3/8	2W
6,8	2 15/32	3/4	3/4	3/8	2W
10,1/4	3 1/8	7/8	7/8	9/16	3W
5/16	3 19/32	1	1	11/16	4W
3/8	3 19/32	1 1/8	1 1/8	13/16	4W
7/16	4 3/16	1 1/4	1 1/4	13/16	5W
1/2	4 3/16	1 3/8	1 3/8	13/16	5W
9/16	4 17/32	1 1/2	1 3/8	15/16	6W
3/4	4 21/32	1 3/4	1 3/8	1 1/16	7W

Nominal Size	1509 GO Member		1559 NO GO Member Class 2B		1529 Double End w / Handle Class 2B		Handle Only		
	EDP No.	Price	EDP No.	Price	EDP No.	Price	No.	Price	
0	80 UNF	100100	46.00	110100	46.00	100111	101.00	1W	9.00
1	64 UNC	100200	46.00	110200	46.00	100211	101.00	1W	9.00
	72 UNF	100300	46.00	110300	46.00	100311	101.00	1W	9.00
2	56 UNC	100400	46.00	110400	46.00	100411	101.00	2W	9.00
	64 UNF	100500	46.00	110500	46.00	100511	101.00	2W	9.00
3	48 UNC	100600	43.00	110600	43.00	100611	95.00	2W	9.00
	56 UNF	100700	43.00	110700	43.00	100711	95.00	2W	9.00
4	40 UNC	100900	43.00	110900	43.00	100911	95.00	2W	9.00
	48 UNF	101000	43.00	111000	43.00	101011	95.00	2W	9.00
5	40 UNC	101100	38.00	111100	38.00	101111	85.00	2W	9.00
	44 UNF	101200	38.00	111200	38.00	101211	85.00	2W	9.00
6	32 UNC	101300	38.00	111300	38.00	101311	85.00	2W	9.00
	40 UNF	101400	38.00	111400	38.00	101411	85.00	2W	9.00
8	32 UNC	101500	38.00	111500	38.00	101511	85.00	2W	9.00
	36 UNF	101600	38.00	111600	38.00	101611	85.00	2W	9.00
10	24 UNC	101700	39.00	111700	39.00	101711	88.00	3W	10.00
	32 UNF	101800	39.00	111800	39.00	101811	88.00	3W	10.00
12	24 UNC	101900	39.00	111900	39.00	101911	88.00	3W	10.00
	28 UNF	102000	39.00	112000	39.00	102011	88.00	3W	10.00
1/4	20 UNC	102200	37.00	112200	37.00	102211	84.00	3W	10.00
	28 UNF	102300	37.00	112300	37.00	102311	84.00	3W	10.00
5/16	18 UNC	102500	37.00	112500	37.00	102511	85.00	4W	11.00
	24 UNF	102600	37.00	112600	37.00	102611	85.00	4W	11.00
3/8	16 UNC	102800	37.00	112800	37.00	102811	85.00	4W	11.00
	24 UNF	102900	37.00	112900	37.00	102911	85.00	4W	11.00
7/16	14 UNC	103100	37.00	113100	37.00	103111	86.00	5W	12.00
	20 UNF	103200	37.00	113200	37.00	103211	86.00	5W	12.00
1/2	13 UNC	103400	40.00	113400	40.00	103411	92.00	5W	12.00
	20 UNF	103500	40.00	113500	40.00	103511	92.00	5W	12.00
9/16	12 UNC	103700	45.00	113700	45.00	103711	103.00	6W	13.00
	18 UNF	103800	45.00	113800	45.00	103811	103.00	6W	13.00
5/8	11 UNC	104000	46.00	114000	46.00	104011	105.00	6W	13.00
	18 UNF	104100	46.00	114100	46.00	104111	105.00	6W	13.00
3/4	10 UNC	104400	49.00	114400	49.00	104411	114.00	7W	16.00
	16 UNF	104500	49.00	114500	49.00	104511	114.00	7W	16.00

3B gages are available and priced the same as 2B gages. For chrome add 30%.

Taper Lock

■ Metric Sizes - Class 6H



Nominal Size & Pitch mm	1509 GO Member		1559 NO GO Member		1529 Double End w / Handle		Handle Only	
	EDP No.	Price	EDP No.	Price	EDP No.	Price	No.	Price
M2.5 X 0.45	227200	42.00	237200	42.00	227223	92.00	000	8.00
M3 X 0.5	227300	42.00	237300	42.00	227323	92.00	00	8.00
M3.5 X 0.6	227400	37.00	237400	37.00	227423	82.00	00	8.00
M4 X 0.7	227500	37.00	237500	37.00	227523	82.00	0	8.00
M5 X 0.8	227600	37.00	237600	37.00	227623	82.00	0	8.00
M6 X 1.0	227700	30.00	237700	30.00	227723	68.00	1	8.00
M8 X 1.25	227800	30.00	237800	30.00	227823	68.00	1	8.00
M10 X 1.5	228000	32.00	238000	32.00	228023	72.00	2	8.00
M10 X 1.25	228100	32.00	238100	32.00	228123	72.00	2	8.00
M12 X 1.75	228300	36.00	238300	36.00	228323	80.00	2	8.00
M12 X 1.25	228500	36.00	238500	36.00	228523	80.00	2	8.00
M14 X 2.0	228700	42.00	238700	42.00	228723	92.00	3	8.00
M14 X 1.5	228800	42.00	238800	42.00	228823	92.00	3	8.00
M16 X 2.0	229000	43.00	239000	43.00	229023	94.00	3	8.00
M16 X 1.5	229100	43.00	239100	43.00	229123	94.00	3	8.00
M18 X 1.5	229300	49.00	239300	49.00	229323	106.00	3	8.00
M20 X 2.5	229400	51.00	239400	51.00	229423	110.00	3	8.00
M20 X 1.5	229500	51.00	239500	51.00	229523	110.00	3	8.00

For members only add 25% for reversible style. Add 30% for chrome.

Handles are not included with single members. If handles are required for GO or NO GO members, specify "with handle."

When ordering, please use EDP numbers. For complete gage dimensions, refer to table on page 4.

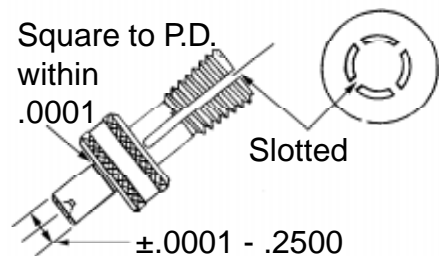
Centerline Hole Location Gages

Threaded hole location plugs are slotted* every 90° around the plug, and the pitch diameter is ground to assure positive location at the pitch diameter of the part being checked. Use to check centerline distance between two or more tapped holes. Normally used in pairs. Concentric to P.D. .0002 T.I.R.

Size (Inch)	EDP No.	Price
0-80 UNF	480100	90.00
1-64 UNC	480200	87.00
1-72 UNF	480300	87.00
2-56 UNC	480400	85.00
2-64 UNF	480500	85.00
3-48 UNC	480600	81.00
3-56 UNF	480700	81.00
4-40 UNC	480900	76.00
4-48 UNF	481000	76.00
5-40 UNC	481100	83.00
5-44 UNF	481200	83.00
6-32 UNC	481300	84.00
6-40 UNF	481400	84.00
8-32 UNC	481500	79.00
8-36 UNF	481600	79.00
10-24 UNC	481700	78.00
10-32 UNF	481800	78.00
12-24 UNC	481900	76.00
12-28 UNF	482000	76.00
1/4-20 UNC	482200	67.00
1/4-28 UNF	482300	67.00

Size (Inch)	EDP No.	Price
5/16-18 UNC	482500	68.00
5/16-24 UNF	482600	68.00
3/8-16 UNC	482800	72.00
3/8-24 UNF	482900	72.00
7/16-14 UNC	483100	70.00
7/16-20 UNF	483200	70.00
1/2-13 UNC	483400	75.00
1/2-20 UNF	483500	75.00
9/16-12 UNC	483700	74.00
9/16-18 UNF	483800	74.00
5/8-11 UNC	484000	76.00
5/8-18 UNF	484100	76.00
3/4-10 UNC	484400	80.00
3/4-16 UNF	484500	80.00
7/8-9 UNC	484800	93.00
7/8-14 UNF	484900	93.00
1-8 UNC	485200	132.00
1-12 UNF	485300	132.00

Size (Metric)	EDP No.	Price
M4 X .7	487500	95.00
M5 X .8	487600	89.00
M6 X 1.0	487700	80.00
M8 X 1.25	487800	80.00
M10 X 1.5	488000	84.00
M12 X 1.75	488300	85.00
M12 X 1.25	488500	86.00



*#10, M5 and smaller are of solid construction (not slotted).