



■ **Truncated Setting Plugs - Class X**  
 ■ **Machine Screw and Fractional Sizes**

**Thread Setting Plug Gages**

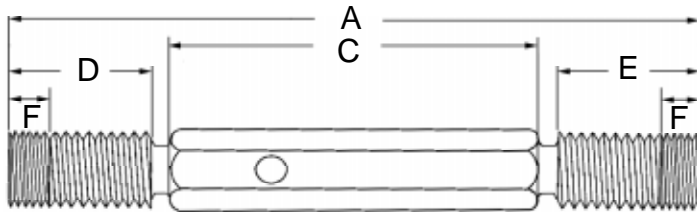


The truncated type thread setting plug gage has a full form threaded portion and a truncated portion. The pitch diameter is constant over the full length. The full form portion checks the pitch diameter and the major diameter clearance. The truncated portion checks pitch diameter and flank angle wear thus assuring the proper setting and control of thread ring gages.

Greenfield thread setting plug gages are made of selected steel, ground and accurately lapped and meticulously inspected in every thread element. The name Greenfield is your guarantee of the finest in thread gages.

Standard set plugs are Class X tolerance on pitch diameter while holding W tolerance on lead and angles.

**General Dimensions**



The shanks on the gaging members are tapered to fit corresponding tapered holes in the handle. Worn members may be removed and the handle salvaged for use with new members.

Members size 0-6 have male point in addition to length shown.

Nominal Size		Handle No.	A		C	D		E	F		
			Length Overall			GO Member			Truncation		
Inch	mm		Thin Ring	Thick Ring	Handle Only	Thin Ring	Thick Ring	NO GO Member	Thin Ring <sup>(GO)</sup>	Thick Ring	NO GO
0, 1, 2	1.6, 2	000	2 1/4	—	1 1/2	7/32	—	7/32	7/64	—	7/64
3	2.5	000	2 9/16	—	1 1/2	3/8	—	3/8	3/16	—	3/16
4, 5, 6	3	00	2 7/8	—	1 3/4	3/8	—	3/8	3/16	—	3/16
8, 10, 12	4, 5	0	3 5/16	—	2	13/32	—	13/32	13/64	—	13/64
1/4, 5/16	6, 8	1	4 3/4	—	2 3/4	3/4	—	3/4	3/8	—	3/8
3/8, 7/16, 1/2	10, 12	2	5 1/2	—	3	1	—	1	1/2	—	1/2
9/16, 5/8, 3/4	14, 16, 20	3	6 1/4	6 7/8	3 1/4	1 1/4	1 7/8	1 1/4	5/8	15/16	5/8
7/8, 1, 1 1/8	24	4	7 1/4	7 7/8	3 5/8	1 1/2	2 1/8	1 1/2	3/4	1 1/16	3/4
1 1/4, 1 3/8, 1 1/2	—	5	8	8 3/4	4	1 5/8	2 3/8	1 5/8	13/16	1 3/16	13/16

For EDP numbers and prices see next page.

■ Truncated Setting Plugs - Class X  
 ■ Machine Screw and Fractional Sizes



Thread Setting Plug Gages

Nominal Size	1556T GO Member				1557T NO GO Member				1527T GO-NO GO w/ handle				Handle Only No. Price	
	Class 2A		Class 3A / Basic		Class 2A		Class 3A		Class 2A		Class 3A			
	EDP No.	Price	EDP No.	Price	EDP No.	Price	EDP No.	Price	EDP No.	Price	EDP No.	Price		
0 80 UNF	300100	64.00	310100	64.00	320100	64.00	330100	64.00	300132	136.00	310133	136.00	000	8.00
1 64 UNC	300200	64.00	310200	64.00	320200	64.00	330200	64.00	300232	136.00	310233	136.00	000	8.00
1 72 UNF	300300	64.00	310300	64.00	320300	64.00	330300	64.00	300332	136.00	310333	136.00	000	8.00
2 56 UNC	300400	64.00	310400	64.00	320400	64.00	330400	64.00	300432	136.00	310433	136.00	000	8.00
2 64 UNF	300500	64.00	310500	64.00	320500	64.00	330500	64.00	300532	136.00	310533	136.00	000	8.00
3 48 UNC	300600	61.00	310600	61.00	320600	61.00	330600	61.00	300632	130.00	310633	130.00	000	8.00
3 56 UNF	300700	61.00	310700	61.00	320700	61.00	330700	61.00	300732	130.00	310733	130.00	000	8.00
4 40 UNC	300900	61.00	310900	61.00	320900	61.00	330900	61.00	300932	130.00	310933	130.00	00	8.00
4 48 UNF	301000	61.00	311000	61.00	321000	61.00	331000	61.00	301032	130.00	311033	130.00	00	8.00
5 40 UNC	301100	58.00	311100	58.00	321100	58.00	331100	58.00	301132	124.00	311133	124.00	00	8.00
5 44 UNF	301200	58.00	311200	58.00	321200	58.00	331200	58.00	301232	124.00	311233	124.00	00	8.00
6 32 UNC	301300	58.00	311300	58.00	321300	58.00	331300	58.00	301332	124.00	311333	124.00	00	8.00
6 40 UNF	301400	58.00	311400	58.00	321400	58.00	331400	58.00	301432	124.00	311433	124.00	00	8.00
8 32 UNC	301500	58.00	311500	58.00	321500	58.00	331500	58.00	301532	124.00	311533	124.00	0	8.00
8 36 UNF	301600	58.00	311600	58.00	321600	58.00	331600	58.00	301632	124.00	311633	124.00	0	8.00
10 24 UNC	301700	58.00	311700	58.00	321700	58.00	331700	58.00	301732	124.00	311733	124.00	0	8.00
10 32 UNF	301800	58.00	311800	58.00	321800	58.00	331800	58.00	301832	124.00	311833	124.00	0	8.00
12 24 UNC	301900	63.00	311900	63.00	321900	63.00	331900	63.00	301932	134.00	311933	134.00	0	8.00
12 28 UNF	302000	63.00	312000	63.00	322000	63.00	332000	63.00	302032	134.00	312033	134.00	0	8.00
1/4 20 UNC	302200	49.00	312200	49.00	322200	49.00	332200	49.00	302232	106.00	312233	106.00	1	8.00
1/4 28 UNF	302300	49.00	312300	49.00	322300	49.00	332300	49.00	302332	106.00	312333	106.00	1	8.00
1/4 32 UNEF	302400	72.00	312400	72.00	322400	72.00	332400	72.00	302432	152.00	312433	152.00	1	8.00
5/16 18 UNC	302500	49.00	312500	49.00	322500	49.00	332500	49.00	302532	106.00	312533	106.00	1	8.00
5/16 24 UNF	302600	49.00	312600	49.00	322600	49.00	332600	49.00	302632	106.00	312633	106.00	1	8.00
5/16 32 UNEF	302700	72.00	312700	72.00	322700	72.00	332700	72.00	302732	152.00	312733	152.00	1	8.00
3/8 16 UNC	302800	51.00	312800	51.00	322800	51.00	332800	51.00	302832	110.00	312833	110.00	2	8.00
3/8 24 UNF	302900	51.00	312900	51.00	322900	51.00	332900	51.00	302932	110.00	312933	110.00	2	8.00
3/8 32 UNEF	303000	84.00	313000	84.00	323000	84.00	333000	84.00	303032	176.00	313033	176.00	2	8.00
7/16 14 UNC	303100	53.00	313100	53.00	323100	53.00	333100	53.00	303132	114.00	313133	114.00	2	8.00
7/16 20 UNF	303200	53.00	313200	53.00	323200	53.00	333200	53.00	303232	114.00	313233	114.00	2	8.00
7/16 28 UNEF	303300	84.00	313300	84.00	323300	84.00	333300	84.00	303332	176.00	313333	176.00	2	8.00
1/2 13 UNC	303400	56.00	313400	56.00	323400	56.00	333400	56.00	303432	120.00	313433	120.00	2	8.00
1/2 20 UNF	303500	56.00	313500	56.00	323500	56.00	333500	56.00	303532	120.00	313533	120.00	2	8.00
1/2 28 UNEF	303600	87.00	313600	87.00	323600	87.00	333600	87.00	303632	182.00	313633	182.00	2	8.00
9/16 12 UNC	303700	65.00	313700	65.00	323700	65.00	333700	65.00	303732	138.00	313733	138.00	3	8.00
9/16 18 UNF	303800	65.00	313800	65.00	323800	65.00	333800	65.00	303832	138.00	313833	138.00	3	8.00
9/16 24 UNEF	303900	89.00	313900	89.00	323900	89.00	333900	89.00	303932	186.00	313933	186.00	3	8.00
5/8 11 UNC	304000	68.00	314000	68.00	324000	68.00	334000	68.00	304032	144.00	314033	144.00	3	8.00
5/8 18 UNF	304100	68.00	314100	68.00	324100	68.00	334100	68.00	304132	144.00	314133	144.00	3	8.00
5/8 24 UNEF	304200	91.00	314200	91.00	324200	91.00	334200	91.00	304232	190.00	314233	190.00	3	8.00
3/4 10 UNC	304400	77.00	314400	77.00	324400	77.00	334400	77.00	304432	162.00	314433	162.00	3	8.00
3/4 16 UNF	304500	77.00	314500	77.00	324500	77.00	334500	77.00	304532	162.00	314533	162.00	3	8.00
3/4 20 UNEF	304600	95.00	314600	95.00	324600	95.00	334600	95.00	304632	198.00	314633	198.00	3	8.00
7/8 9 UNC	304800	89.00	314800	89.00	324800	89.00	334800	89.00	304832	187.00	314833	187.00	4	9.00
7/8 14 UNF	304900	89.00	314900	89.00	324900	89.00	334900	89.00	304932	187.00	314933	187.00	4	9.00
7/8 20 UNEF	305000	109.00	315000	109.00	325000	109.00	335000	109.00	305032	227.00	315033	227.00	4	9.00
1 8 UNC	305200	105.00	315200	105.00	325200	105.00	335200	105.00	305232	219.00	315233	219.00	4	9.00
1 12 UNF	305300	105.00	315300	105.00	325300	105.00	335300	105.00	305332	219.00	315333	219.00	4	9.00
1 14 UNS	305400	105.00	315400	105.00	325400	105.00	335400	105.00	305432	219.00	315433	219.00	4	9.00
1 20 UNEF	305500	117.00	315500	117.00	325500	117.00	335500	117.00	305532	243.00	315533	243.00	4	9.00
1-1/8 7 UNC	305700	127.00	315700	127.00	325700	127.00	335700	127.00	305732	263.00	315733	263.00	4	9.00
1-1/8 12 UNF	305800	127.00	315800	127.00	325800	127.00	335800	127.00	305832	263.00	315833	263.00	4	9.00
1-1/4 7 UNC	306100	134.00	316100	134.00	326100	134.00	336100	134.00	306132	277.00	316133	277.00	5	9.00
1-1/4 12 UNF	306200	134.00	316200	134.00	326200	134.00	336200	134.00	306232	277.00	316233	277.00	5	9.00
1-3/8 6 UNC	306500	156.00	316500	156.00	326500	156.00	336500	156.00	306532	321.00	316533	321.00	5	9.00
1-3/8 12 UNF	306600	156.00	316600	156.00	326600	156.00	336600	156.00	306632	321.00	316633	321.00	5	9.00
1-1/2 6 UNC	306900	171.00	316900	171.00	326900	171.00	336900	171.00	306932	351.00	316933	351.00	5	9.00
1-1/2 12 UNF	307000	171.00	317000	171.00	327000	171.00	337000	171.00	307032	351.00	317033	351.00	5	9.00

Handles are not included with single members. If handles are required for GO or NO GO members, specify "with handle."

\*For W tolerance on pitch diameters add 33.3%.

When ordering, please use EDP numbers.