

Diamond Master Vernier Calipers Series 522

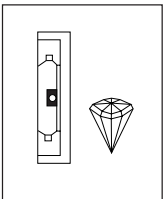
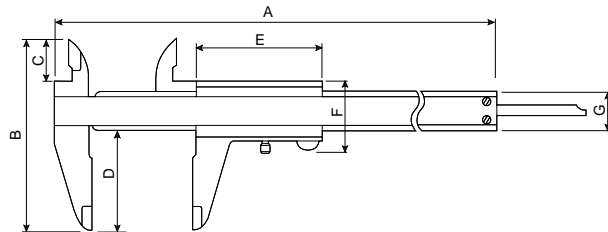


522-600

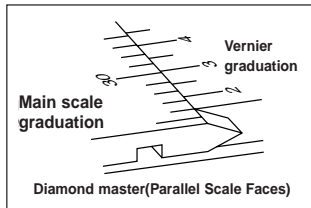


Features

- The main and vernier scales are flush-fitted to eliminate parallax errors because of the diamond-shaped (octagonal) cross section of the main scale.
- Can Measure steps.



Diamond-shaped cross section of main scale



Dimensions

Order No.	A	B	C	D	E	F	G	t*
522-601	9.02"	3.05"	.67"	1.60"	2.11"	1.18"	.59"	.138"
522-602								
522-600								

* t : Jaw Thickness

Specifications

Inch/Metric

Order No.	Range		Vernier Resolution		Accuracy	Remarks
	Lower scale	Upper scale	Lower scale	Upper scale		
522-601	0-150mm	0-6"	0.05mm	1/128"	±0.05mm	
522-602	0-150mm	0-6"	0.02mm	.001"	±0.03mm	

Diamond Master Vernier Caliper

Metric

Order No.	Range		Vernier Resolution		Accuracy
	Lower scale	Upper scale	Lower scale	Upper scale	
522-600	0-150mm	—	0.05mm	—	±0.05mm